



RB39B Monoclonal Antibody

Catalog No	BYmab-06051
Isotype	IgG
Reactivity	Human;Mouse
Applications	WB
Gene Name	RAB39B
Protein Name	Ras-related protein Rab-39B
Immunogen	Synthesized peptide derived from human protein . at AA range: 80-160
Specificity	RB39B Monoclonal Antibody detects endogenous levels of protein.
Formulation	Liquid in PBS containing 50% glycerol, and 0.02% sodium azide.
Source	Monoclonal, Mouse,IgG
Purification	The antibody was affinity-purified from mouse antiserum by affinity-chromatography using epitope-specific immunogen.
Dilution	WB 1:500-2000
Concentration	1 mg/ml
Purity	≥90%
Storage Stability	-20°C/1 year
Synonyms	
Observed Band	23kD
Cell Pathway	Cell membrane ; Lipid-anchor ; Cytoplasmic side . Cytoplasmic vesicle membrane ; Lipid-anchor ; Cytoplasmic side . Golgi apparatus . Partial colocalization with markers that cycle from the cell surface to the trans-Golgi network. .
Tissue Specificity	Highly expressed in the brain.
Function	function:May be involved in vesicular trafficking.,similarity:Belongs to the small GTPase superfamily. Rab family.,
Background	This gene encodes a member of the Rab family of proteins. Rab proteins are small GTPases that are involved in vesicular trafficking. Mutations in this gene are associated with X-linked mental retardation. [provided by RefSeq, Aug 2013],
matters needing attention	Avoid repeated freezing and thawing!

Nanjing BYabscience technology Co.,Ltd

网址: www.njbybio.com

官方热线: 025-5229-8998

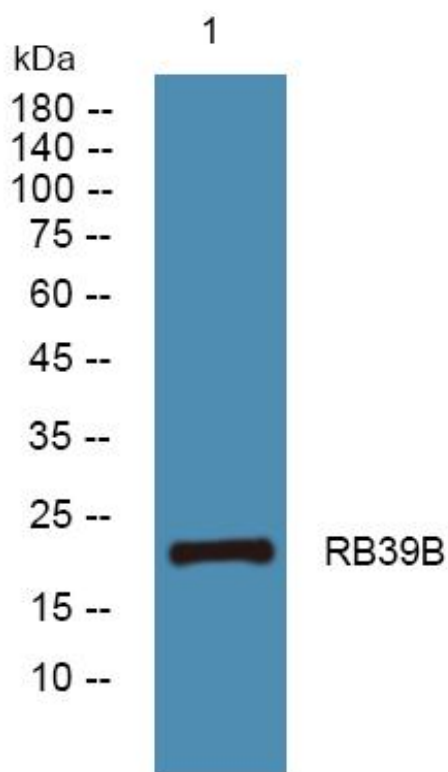
监督电话: 15950492658



Usage suggestions

This product can be used in immunological reaction related experiments. For more information, please consult technical personnel.

Products Images



Western Blot analysis of various cells using RB39B Monoclonal Antibody

Nanjing BYabs science technology Co.,Ltd

网址: www.njbybio.com

官方热线: 025-5229-8998

监督电话: 15950492658