



# RB39A Monoclonal Antibody

Catalog No	BYmab-06050
Isotype	IgG
Reactivity	Human;Mouse
Applications	WB
Gene Name	RAB39A RAB39
Protein Name	Ras-related protein Rab-39A (Rab-39)
Immunogen	Synthesized peptide derived from human protein . at AA range: 50-130
Specificity	RB39A Monoclonal Antibody detects endogenous levels of protein.
Formulation	Liquid in PBS containing 50% glycerol, and 0.02% sodium azide.
Source	Monoclonal, Mouse,IgG
Purification	The antibody was affinity-purified from mouse antiserum by affinity-chromatography using epitope-specific immunogen.
Dilution	WB 1:500-2000
Concentration	1 mg/ml
Purity	≥90%
Storage Stability	-20°C/1 year
Synonyms	
Observed Band	23kD
Cell Pathway	Cell membrane ; Lipid-anchor ; Cytoplasmic side . Cytoplasmic vesicle, phagosome . Cytoplasmic vesicle, phagosome membrane ; Lipid-anchor ; Cytoplasmic side . Lysosome . Recruited to phagosomes containing S.aureus or M.tuberculosis.
Tissue Specificity	Brain,
Function	function:May be involved in vesicular trafficking.,similarity:Belongs to the small GTPase superfamily. Rab family.,
Background	function:May be involved in vesicular trafficking.,similarity:Belongs to the small GTPase superfamily. Rab family.,
matters needing attention	Avoid repeated freezing and thawing!

Nanjing BYabscience technology Co.,Ltd

网址: [www.njbybio.com](http://www.njbybio.com)

官方热线: 025-5229-8998

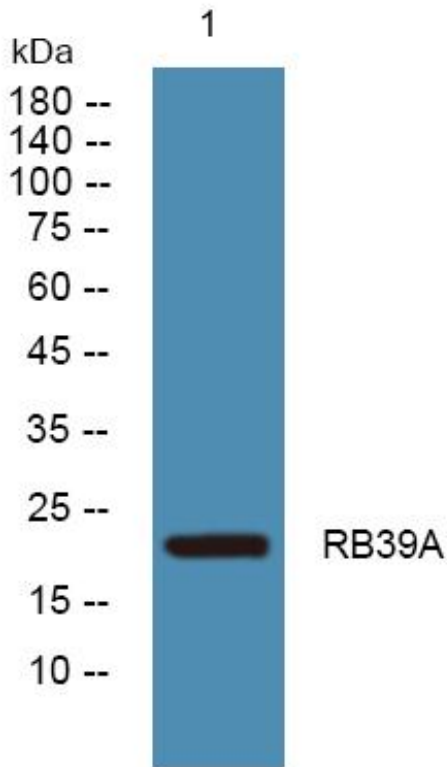
监督电话: 15950492658



### Usage suggestions

This product can be used in immunological reaction related experiments. For more information, please consult technical personnel.

## Products Images



Western Blot analysis of various cells using RB39A Monoclonal Antibody

Nanjing BYabs science technology Co.,Ltd

网址: [www.njbybio.com](http://www.njbybio.com)

官方热线: 025-5229-8998

监督电话: 15950492658