



# RAB36 Monoclonal Antibody

Catalog No	BYmab-06049
Isotype	IgG
Reactivity	Human;Mouse
Applications	WB
Gene Name	RAB36
Protein Name	Ras-related protein Rab-36
Immunogen	Synthesized peptide derived from human protein . at AA range: 170-250
Specificity	RAB36 Monoclonal Antibody detects endogenous levels of protein.
Formulation	Liquid in PBS containing 50% glycerol, and 0.02% sodium azide.
Source	Monoclonal, Mouse,IgG
Purification	The antibody was affinity-purified from mouse antiserum by affinity-chromatography using epitope-specific immunogen.
Dilution	WB 1:500-2000
Concentration	1 mg/ml
Purity	≥90%
Storage Stability	-20°C/1 year
Synonyms	
Observed Band	36kD
Cell Pathway	Golgi apparatus membrane; Lipid-anchor.
Tissue Specificity	Ubiquitously present in all tissues examined.
Function	function:Protein transport. Probably involved in vesicular traffic.,similarity:Belongs to the small GTPase superfamily. Rab family.,tissue specificity:Ubiquitously present in all tissues examined.,
Background	function:Protein transport. Probably involved in vesicular traffic.,similarity:Belongs to the small GTPase superfamily. Rab family.,tissue specificity:Ubiquitously present in all tissues examined.,
matters needing attention	Avoid repeated freezing and thawing!

Nanjing BYabscience technology Co.,Ltd

网址: [www.njbybio.com](http://www.njbybio.com)

官方热线: 025-5229-8998

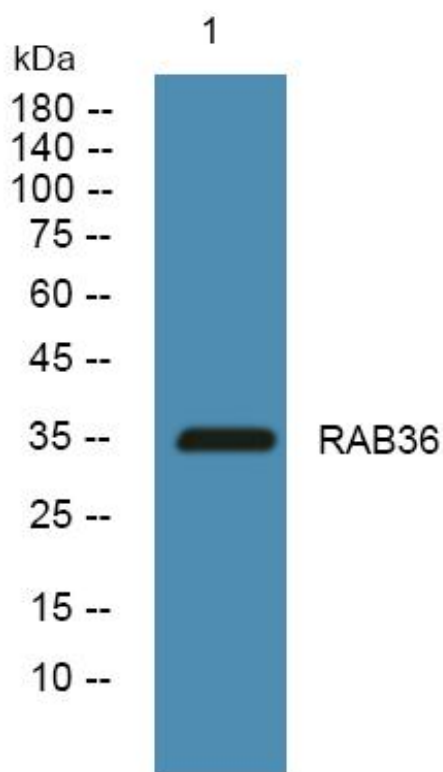
监督电话: 15950492658



### Usage suggestions

This product can be used in immunological reaction related experiments. For more information, please consult technical personnel.

## Products Images



Western Blot analysis of various cells using RAB36 Monoclonal Antibody