



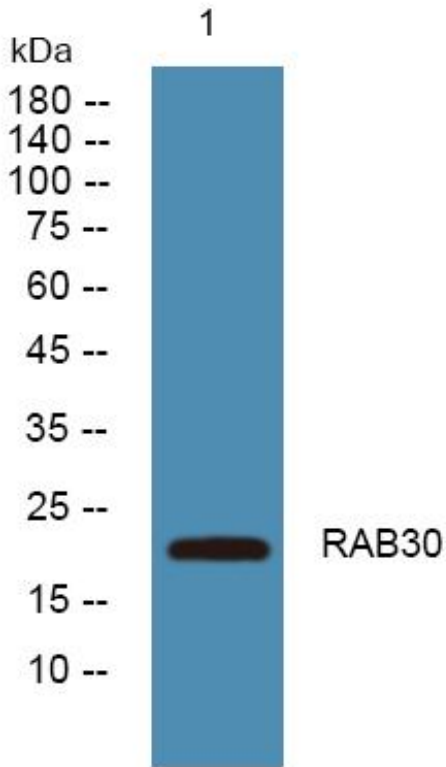
RAB30 Monoclonal Antibody

Catalog No	BYmab-06046
Isotype	IgG
Reactivity	Human;Mouse
Applications	WB
Gene Name	RAB30
Protein Name	Ras-related protein Rab-30
Immunogen	Synthesized peptide derived from human protein . at AA range: 80-160
Specificity	RAB30 Monoclonal Antibody detects endogenous levels of protein.
Formulation	Liquid in PBS containing 50% glycerol, and 0.02% sodium azide.
Source	Monoclonal, Mouse,IgG
Purification	The antibody was affinity-purified from mouse antiserum by affinity-chromatography using epitope-specific immunogen.
Dilution	WB 1:500-2000
Concentration	1 mg/ml
Purity	≥90%
Storage Stability	-20°C/1 year
Synonyms	
Observed Band	22kD
Cell Pathway	Membrane ; Lipid-anchor ; Cytoplasmic side . Golgi apparatus, trans-Golgi network . Cytoplasm . Golgi apparatus .
Tissue Specificity	B-cell,Brain,Cerebellum,Human uterus,Melanocyte,
Function	similarity:Belongs to the small GTPase superfamily. Rab family.,
Background	similarity:Belongs to the small GTPase superfamily. Rab family.,
matters needing attention	Avoid repeated freezing and thawing!
Usage suggestions	This product can be used in immunological reaction related experiments. For more information, please consult technical personnel.

Nanjing BYabscience technology Co.,Ltd



Products Images



Western Blot analysis of various cells using RAB30
Monoclonal Antibody

Nanjing BYabs science technology Co.,Ltd

网址: www.njbybio.com

官方热线: 025-5229-8998

监督电话: 15950492658