



# RAB19 Monoclonal Antibody

Catalog No	BYmab-06039
Isotype	IgG
Reactivity	Human;Rat;Mouse
Applications	WB
Gene Name	RAB19 RAB19B
Protein Name	Ras-related protein Rab-19
Immunogen	Synthesized peptide derived from human protein . at AA range: 110-190
Specificity	RAB19 Monoclonal Antibody detects endogenous levels of protein.
Formulation	Liquid in PBS containing 50% glycerol, and 0.02% sodium azide.
Source	Monoclonal, Mouse,IgG
Purification	The antibody was affinity-purified from mouse antiserum by affinity-chromatography using epitope-specific immunogen.
Dilution	WB 1:500-2000
Concentration	1 mg/ml
Purity	≥90%
Storage Stability	-20°C/1 year
Synonyms	
Observed Band	23kD
Cell Pathway	Cell membrane ; Lipid-anchor ; Cytoplasmic side .
Tissue Specificity	Colon carcinoma,
Function	similarity:Belongs to the small GTPase superfamily. Rab family.,
Background	similarity:Belongs to the small GTPase superfamily. Rab family.,
matters needing attention	Avoid repeated freezing and thawing!
Usage suggestions	This product can be used in immunological reaction related experiments. For more information, please consult technical personnel.

Nanjing BYabscience technology Co.,Ltd

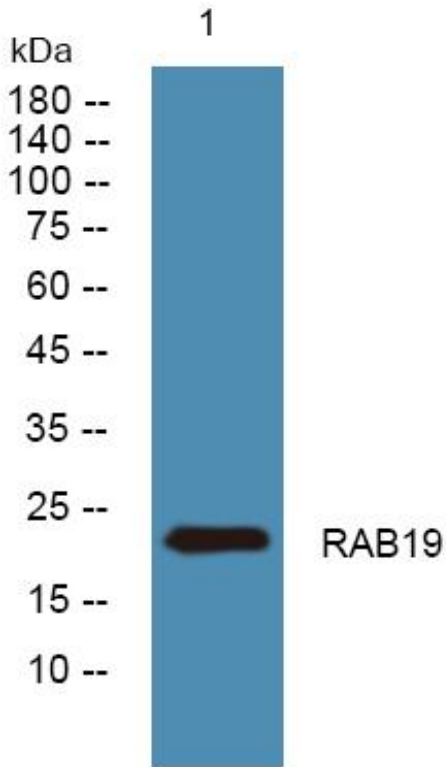
网址: [www.njbybio.com](http://www.njbybio.com)

官方热线: 025-5229-8998

监督电话: 15950492658



## Products Images



Western Blot analysis of various cells using RAB19  
Monoclonal Antibody