



# RAB17 Monoclonal Antibody

<b>Catalog No</b>	BYmab-06038
<b>Isotype</b>	IgG
<b>Reactivity</b>	Human;Mouse
<b>Applications</b>	WB
<b>Gene Name</b>	RAB17
<b>Protein Name</b>	Ras-related protein Rab-17
<b>Immunogen</b>	Synthesized peptide derived from human protein . at AA range: 50-130
<b>Specificity</b>	RAB17 Monoclonal Antibody detects endogenous levels of protein.
<b>Formulation</b>	Liquid in PBS containing 50% glycerol, and 0.02% sodium azide.
<b>Source</b>	Monoclonal, Mouse,IgG
<b>Purification</b>	The antibody was affinity-purified from mouse antiserum by affinity-chromatography using epitope-specific immunogen.
<b>Dilution</b>	WB 1:500-2000
<b>Concentration</b>	1 mg/ml
<b>Purity</b>	≥90%
<b>Storage Stability</b>	-20°C/1 year
<b>Synonyms</b>	
<b>Observed Band</b>	23kD
<b>Cell Pathway</b>	Recycling endosome membrane ; Lipid-anchor ; Cytoplasmic side . Melanosome . Cell projection, dendrite . May also localize at the basolateral and apical plasma membrane. In neurons, localizes to the cell body and dendritic shaft and spine. .
<b>Tissue Specificity</b>	Expressed in melanocytes (at protein level).
<b>Function</b>	function:Might be involved in transcellular transport.,similarity:Belongs to the small GTPase superfamily. Rab family.,
<b>Background</b>	The Rab subfamily of small GTPases plays an important role in the regulation of membrane trafficking. RAB17 is an epithelial cell-specific GTPase (Lutcke et al., 1993 [PubMed 8486736]).[supplied by OMIM, Oct 2009],
<b>matters needing attention</b>	Avoid repeated freezing and thawing!

**Nanjing BYabscience technology Co.,Ltd**

网址: [www.njbybio.com](http://www.njbybio.com)

官方热线: 025-5229-8998

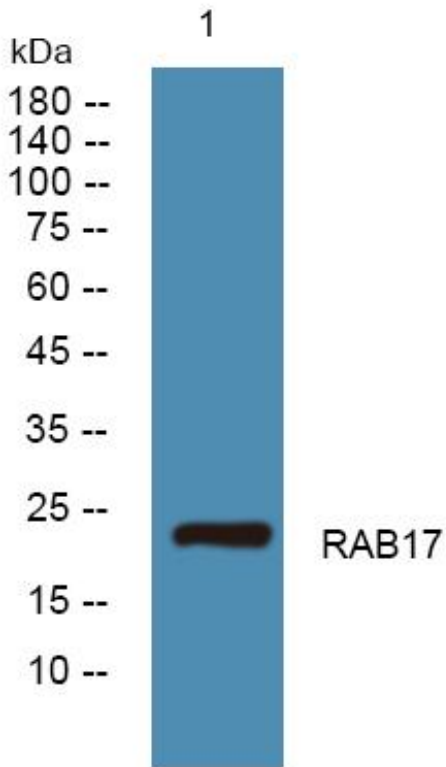
监督电话: 15950492658



### Usage suggestions

This product can be used in immunological reaction related experiments. For more information, please consult technical personnel.

## Products Images



Western Blot analysis of various cells using RAB17 Monoclonal Antibody