



# GNDS Monoclonal Antibody

<b>Catalog No</b>	BYmab-06012
<b>Isotype</b>	IgG
<b>Reactivity</b>	Human;Mouse;Rat
<b>Applications</b>	WB
<b>Gene Name</b>	RALGDS KIAA1308 RGF
<b>Protein Name</b>	Ral guanine nucleotide dissociation stimulator (RalGDS) (Ral guanine nucleotide exchange factor) (RalGEF)
<b>Immunogen</b>	Synthesized peptide derived from human protein . at AA range: 130-210
<b>Specificity</b>	GNDS Monoclonal Antibody detects endogenous levels of protein.
<b>Formulation</b>	Liquid in PBS containing 50% glycerol, and 0.02% sodium azide.
<b>Source</b>	Monoclonal, Mouse,IgG
<b>Purification</b>	The antibody was affinity-purified from mouse antiserum by affinity-chromatography using epitope-specific immunogen.
<b>Dilution</b>	WB 1:500-2000
<b>Concentration</b>	1 mg/ml
<b>Purity</b>	≥90%
<b>Storage Stability</b>	-20°C/1 year
<b>Synonyms</b>	
<b>Observed Band</b>	100kD
<b>Cell Pathway</b>	Cytoplasm . Nucleus . Localizes mainly in the peripheral region of the cytoplasmic membrane in oocytes and in preimplantation embryos until the 8-cell stage. Between the late 1-cell and the early 2-cell stages, nuclear localization becomes stronger. After the 4-cell stage, not detected in the nucleus. .
<b>Tissue Specificity</b>	Brain,Epithelium,Placenta,Primary B-Cells,Spleen,Thalamus,
<b>Function</b>	domain:The Ras-associating domain interacts with Ras.,function:Stimulates the dissociation of GDP from the Ras-related RalA and RalB GTPases which allows GTP binding and activation of the GTPases. Interacts and acts as an effector molecule for R-Ras, H-Ras, K-Ras, and Rap.,similarity:Contains 1 N-terminal Ras-GEF domain.,similarity:Contains 1 Ras-associating domain.,similarity:Contains 1 Ras-GEF domain.,subunit:Interacts with RIT1 and RIT2.,
<b>Background</b>	Guanine nucleotide dissociation stimulators (GDSs, or exchange factors), such as RALGDS, are effectors of Ras-related GTPases (see MIM 190020) that

**Nanjing BYabscience technology Co.,Ltd**



participate in signaling for a variety of cellular processes.[supplied by OMIM, Nov 2010],

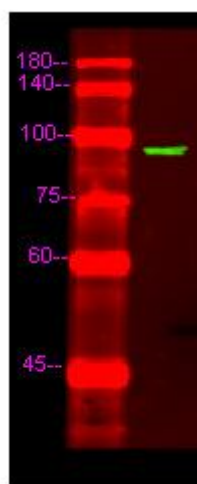
**matters needing attention**

Avoid repeated freezing and thawing!

**Usage suggestions**

This product can be used in immunological reaction related experiments. For more information, please consult technical personnel.

## Products Images



Western Blot analysis of various cells using GNDS Monoclonal Antibody