



SFTPD Monoclonal Antibody

Catalog No	BYmab-05997
Isotype	IgG
Reactivity	Human;Mouse;Rat
Applications	WB
Gene Name	SFTPD COLEC7 PSPD SFTP4
Protein Name	Pulmonary surfactant-associated protein D (PSP-D) (SP-D) (Collectin-7) (Lung surfactant protein D)
Immunogen	Synthesized peptide derived from human protein . at AA range: 290-370
Specificity	SFTPD Monoclonal Antibody detects endogenous levels of protein.
Formulation	Liquid in PBS containing 50% glycerol, and 0.02% sodium azide.
Source	Monoclonal, Mouse,IgG
Purification	The antibody was affinity-purified from mouse antiserum by affinity-chromatography using epitope-specific immunogen.
Dilution	WB 1:500-2000
Concentration	1 mg/ml
Purity	≥90%
Storage Stability	-20°C/1 year
Synonyms	
Observed Band	41kD
Cell Pathway	Secreted, extracellular space, extracellular matrix. Secreted, extracellular space, surface film.
Tissue Specificity	Expressed in lung, brain, pancreas and adipose tissue (mainly mature adipocytes).
Function	function:Contributes to the lung's defense against inhaled microorganisms. May participate in the extracellular reorganization or turnover of pulmonary surfactant. Binds strongly maltose residues and to a lesser extent other alpha-glucosyl moieties.,miscellaneous:Pulmonary surfactant consists of 90% lipid and 10% protein. There are 4 surfactant-associated proteins: 2 collagenous, carbohydrate-binding glycoproteins (SP-A and SP-D) and 2 small hydrophobic proteins (SP-B and SP-C).,online information:Pulmonary surfactant protein SP-D,PTM:Hydroxylation on proline residues within the sequence motif, GXPG, is most likely to be 4-hydroxy as this fits the requirement for 4-hydroxylation in vertebrates.,PTM:The N-terminus is blocked.,similarity:Belongs to the SFTPD family.,similarity:Contains 1 C-type lectin domain.,similarity:Contains 1

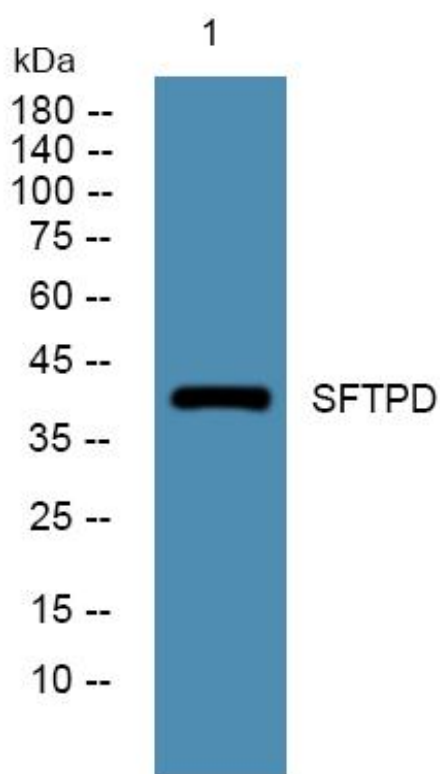
Nanjing BYabscience technology Co.,Ltd



collagen-like domain.,subunit:Oligomeric complex of 4 set o

Background	The protein encoded by this gene is part of the innate immune response, protecting the lungs against inhaled microorganisms and chemicals. The encoded protein may also be involved in surfactant metabolism. [provided by RefSeq, Jul 2015],
matters needing attention	Avoid repeated freezing and thawing!
Usage suggestions	This product can be used in immunological reaction related experiments. For more information, please consult technical personnel.

Products Images



Western Blot analysis of various cells using SFTPD Monoclonal Antibody

Nanjing BYabscience technology Co.,Ltd

网址: www.njbybio.com

官方热线: 025-5229-8998

监督电话: 15950492658