



# PPME1 Monoclonal Antibody

<b>Catalog No</b>	BYmab-05987
<b>Isotype</b>	IgG
<b>Reactivity</b>	Human;Rat;Mouse
<b>Applications</b>	WB
<b>Gene Name</b>	PPME1 PME1 PP2593 PRO0750
<b>Protein Name</b>	Protein phosphatase methylesterase 1 (PME-1) (EC 3.1.1.89)
<b>Immunogen</b>	Synthesized peptide derived from human protein . at AA range: 220-300
<b>Specificity</b>	PPME1 Monoclonal Antibody detects endogenous levels of protein.
<b>Formulation</b>	Liquid in PBS containing 50% glycerol, and 0.02% sodium azide.
<b>Source</b>	Monoclonal, Mouse,IgG
<b>Purification</b>	The antibody was affinity-purified from mouse antiserum by affinity-chromatography using epitope-specific immunogen.
<b>Dilution</b>	WB 1:500-2000
<b>Concentration</b>	1 mg/ml
<b>Purity</b>	≥90%
<b>Storage Stability</b>	-20°C/1 year
<b>Synonyms</b>	
<b>Observed Band</b>	42kD
<b>Cell Pathway</b>	cell-cell adherens junction,
<b>Tissue Specificity</b>	Amygdala,Cervix carcinoma,Fetal liver,Lung,Platelet,Skin,
<b>Function</b>	function:Demethylates proteins that have been reversibly carboxymethylated. Demethylates PPP2CB (in vitro).,sequence caution:Wrong choice of CDS.,similarity:Belongs to the AB hydrolase superfamily.,subunit:Bounds PPP2CB.,
<b>Background</b>	This gene encodes a protein phosphatase methylesterase localized to the nucleus. The encoded protein acts on the protein phosphatase-2A catalytic subunit and supports the ERK pathway through dephosphorylation of regulatory proteins. It plays a role in malignant glioma progression. Alternative splicing results in multiple transcript variants. [provided by RefSeq, Oct 2012],
<b>matters needing attention</b>	Avoid repeated freezing and thawing!

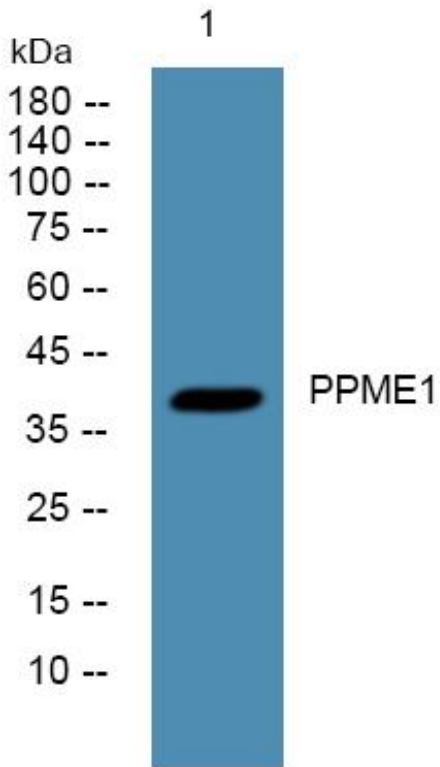
**Nanjing BYabscience technology Co.,Ltd**



### Usage suggestions

This product can be used in immunological reaction related experiments. For more information, please consult technical personnel.

## Products Images



Western Blot analysis of various cells using PPME1 Monoclonal Antibody

Nanjing BYabs science technology Co.,Ltd

网址: [www.njbybio.com](http://www.njbybio.com)

官方热线: 025-5229-8998

监督电话: 15950492658