



# UBE2W Monoclonal Antibody

<b>Catalog No</b>	BYmab-05977
<b>Isotype</b>	IgG
<b>Reactivity</b>	Human;Rat;Mouse
<b>Applications</b>	WB
<b>Gene Name</b>	UBE2W UBC16
<b>Protein Name</b>	Ubiquitin-conjugating enzyme E2 W (EC 6.3.2.19) (Ubiquitin carrier protein W) (Ubiquitin-conjugating enzyme 16) (UBC-16) (Ubiquitin-protein ligase W)
<b>Immunogen</b>	Synthesized peptide derived from human protein . at AA range: 90-170
<b>Specificity</b>	UBE2W Monoclonal Antibody detects endogenous levels of protein.
<b>Formulation</b>	Liquid in PBS containing 50% glycerol, and 0.02% sodium azide.
<b>Source</b>	Monoclonal, Mouse,IgG
<b>Purification</b>	The antibody was affinity-purified from mouse antiserum by affinity-chromatography using epitope-specific immunogen.
<b>Dilution</b>	WB 1:500-2000
<b>Concentration</b>	1 mg/ml
<b>Purity</b>	≥90%
<b>Storage Stability</b>	-20°C/1 year
<b>Synonyms</b>	
<b>Observed Band</b>	16kD
<b>Cell Pathway</b>	Nucleus . In the nucleus, colocalizes with FANCL. .
<b>Tissue Specificity</b>	Widely expressed, with highest expression in brain, liver, pancreas and heart.
<b>Function</b>	catalytic activity:ATP + ubiquitin + protein lysine = AMP + diphosphate + protein N-ubiquityllysine.,function:Catalyzes the covalent attachment of ubiquitin to other proteins.,pathway:Protein modification; protein ubiquitination.,similarity:Belongs to the ubiquitin-conjugating enzyme family.,subunit:Homodimer.,
<b>Background</b>	This gene encodes a nuclear-localized ubiquitin-conjugating enzyme (E2) that, along with ubiquitin-activating (E1) and ligating (E3) enzymes, coordinates the addition of a ubiquitin moiety to existing proteins. The encoded protein promotes the ubiquitination of Fanconi anemia complementation group proteins and may be important in the repair of DNA damage. There is a pseudogene for this gene on chromosome 1. Alternative splicing results in multiple transcript variants. [provided by RefSeq, Aug 2012],

**Nanjing BYabscience technology Co.,Ltd**



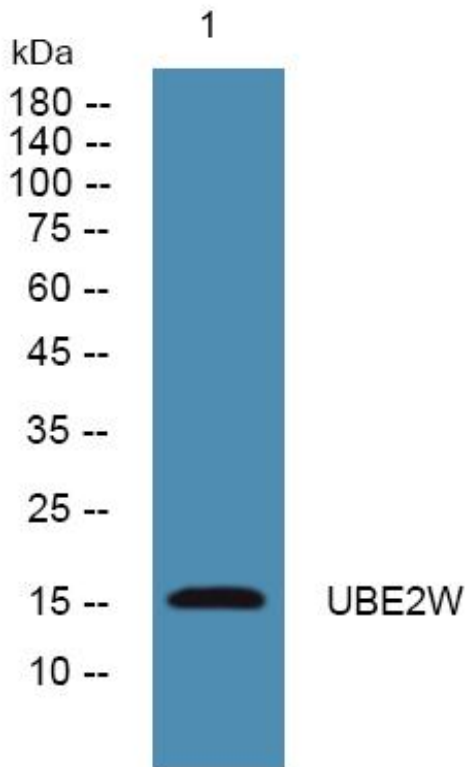
**matters needing attention**

Avoid repeated freezing and thawing!

**Usage suggestions**

This product can be used in immunological reaction related experiments. For more information, please consult technical personnel.

## Products Images



Western Blot analysis of various cells using UBE2W Monoclonal Antibody

Nanjing BYabs science technology Co.,Ltd

网址: [www.njbybio.com](http://www.njbybio.com)

官方热线: 025-5229-8998

监督电话: 15950492658