



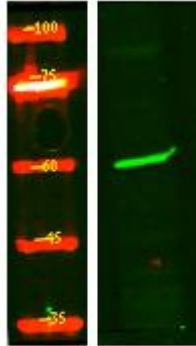
PR38B Monoclonal Antibody

Catalog No	BYmab-05971
Isotype	IgG
Reactivity	Human;Rat;Mouse
Applications	WB
Gene Name	PRPF38B
Protein Name	Pre-mRNA-splicing factor 38B (Sarcoma antigen NY-SAR-27)
Immunogen	Synthesized peptide derived from human protein . at AA range: 180-260
Specificity	PR38B Monoclonal Antibody detects endogenous levels of protein.
Formulation	Liquid in PBS containing 50% glycerol, and 0.02% sodium azide.
Source	Monoclonal, Mouse,IgG
Purification	The antibody was affinity-purified from mouse antiserum by affinity-chromatography using epitope-specific immunogen.
Dilution	WB 1:500-2000
Concentration	1 mg/ml
Purity	≥90%
Storage Stability	-20°C/1 year
Synonyms	
Observed Band	60kD
Cell Pathway	Nucleus .
Tissue Specificity	Brain,Epithelium,Lung,Muscle,Skin,Testis,
Function	function:May be required for pre-mRNA splicing .,PTM:Phosphorylated upon DNA damage, probably by ATM or ATR.,similarity:Belongs to the PRP38 family.,
Background	function:May be required for pre-mRNA splicing .,PTM:Phosphorylated upon DNA damage, probably by ATM or ATR.,similarity:Belongs to the PRP38 family.,
matters needing attention	Avoid repeated freezing and thawing!
Usage suggestions	This product can be used in immunological reaction related experiments. For more information, please consult technical personnel.

Nanjing BYabscience technology Co.,Ltd



Products Images



Western Blot analysis of various cells using PR38B
Monoclonal Antibody