



PLS5 Monoclonal Antibody

Catalog No	BYmab-05933
Isotype	IgG
Reactivity	Human;Rat;Mouse;
Applications	WB
Gene Name	PLSCR5
Protein Name	Phospholipid scramblase family member 5
Immunogen	Synthesized peptide derived from human protein . at AA range: 40-120
Specificity	PLS5 Monoclonal Antibody detects endogenous levels of protein.
Formulation	Liquid in PBS containing 50% glycerol, and 0.02% sodium azide.
Source	Monoclonal, Mouse,IgG
Purification	The antibody was affinity-purified from mouse antiserum by affinity-chromatography using epitope-specific immunogen.
Dilution	WB 1:500-2000
Concentration	1 mg/ml
Purity	≥90%
Storage Stability	-20°C/1 year
Synonyms	
Observed Band	29kD
Cell Pathway	plasma membrane,
Tissue Specificity	
Function	similarity:Belongs to the phospholipid scramblase family.,
Background	similarity:Belongs to the phospholipid scramblase family.,
matters needing attention	Avoid repeated freezing and thawing!
Usage suggestions	This product can be used in immunological reaction related experiments. For more information, please consult technical personnel.

Nanjing BYabscience technology Co.,Ltd

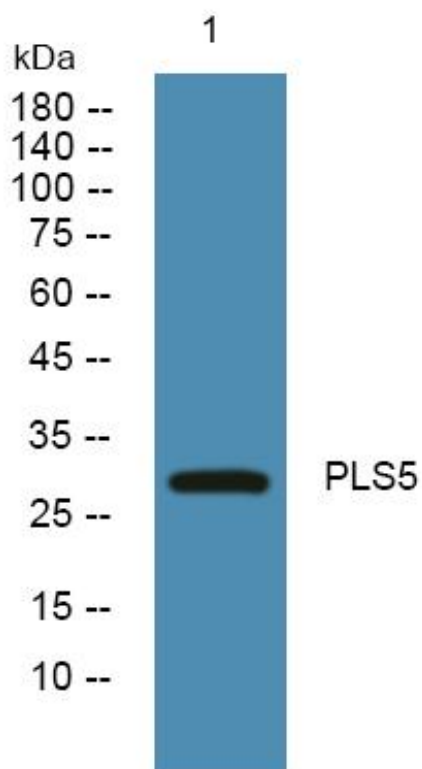
网址: www.njbybio.com

官方热线: 025-5229-8998

监督电话: 15950492658



Products Images



Nanjing BYabs science technology Co.,Ltd

网址: www.njbybio.com

官方热线: 025-5229-8998

监督电话: 15950492658