



PLS1 Monoclonal Antibody

| | |
|--------------------|---|
| Catalog No | BYmab-05929 |
| Isotype | IgG |
| Reactivity | Human;Rat;Mouse; |
| Applications | WB |
| Gene Name | PLSCR1 |
| Protein Name | Phospholipid scramblase 1 (PL scramblase 1) (Ca(2+)-dependent phospholipid scramblase 1) (Erythrocyte phospholipid scramblase) (MmTRA1b) |
| Immunogen | Synthesized peptide derived from human protein . at AA range: 170-250 |
| Specificity | PLS1 Monoclonal Antibody detects endogenous levels of protein. |
| Formulation | Liquid in PBS containing 50% glycerol, and 0.02% sodium azide. |
| Source | Monoclonal, Mouse,IgG |
| Purification | The antibody was affinity-purified from mouse antiserum by affinity-chromatography using epitope-specific immunogen. |
| Dilution | WB 1:500-2000 |
| Concentration | 1 mg/ml |
| Purity | ≥90% |
| Storage Stability | -20°C/1 year |
| Synonyms | |
| Observed Band | 34kD |
| Cell Pathway | Cell membrane ; Single-pass type II membrane protein . Cell membrane ; Lipid-anchor ; Cytoplasmic side. Nucleus . Cytoplasm . Cytoplasm, perinuclear region . Localizes to the perinuclear region in the presence of RELT (PubMed:22052202). Palmitoylation regulates its localization to the cell membrane or the nucleus; trafficking to the cell membrane is dependent upon palmitoylation whereas in the absence of palmitoylation, localizes to the nucleus (PubMed:12564925). . |
| Tissue Specificity | Expressed in platelets, erythrocyte membranes, lymphocytes, spleen, thymus, prostate, testis, uterus, intestine, colon, heart, placenta, lung, liver, kidney and pancreas. Not detected in brain and skeletal muscle. |
| Function | cofactor:Calcium.,function:May mediate accelerated ATP-independent bidirectional transbilayer migration of phospholipids upon binding calcium ions that results in a loss of phospholipid asymmetry in the plasma membrane. May play a central role in the initiation of fibrin clot formation, in the activation of mast cells and in the recognition of apoptotic and injured cells by the reticuloendothelial |

Nanjing BYabscience technology Co.,Ltd



system.,function:May play a role in the antiviral response of interferon (IFN) by amplifying and enhancing the IFN response through increased expression of select subset of potent antiviral genes. May contribute to cytokine-regulated cell proliferation and differentiation.,induction:By phosphorylation by PKC. Induced by INFB1 in response to a viral infection.,online information:Scramblase entry,PTM:Known to be palmitoylated at one, yet undefined, site.,similarity:Belongs to the phospholipid scr

Background

cofactor:Calcium.,function:May mediate accelerated ATP-independent bidirectional transbilayer migration of phospholipids upon binding calcium ions that results in a loss of phospholipid asymmetry in the plasma membrane. May play a central role in the initiation of fibrin clot formation, in the activation of mast cells and in the recognition of apoptotic and injured cells by the reticuloendothelial system.,function:May play a role in the antiviral response of interferon (IFN) by amplifying and enhancing the IFN response through increased expression of select subset of potent antiviral genes. May contribute to cytokine-regulated cell proliferation and differentiation.,induction:By phosphorylation by PKC. Induced by INFB1 in response to a viral infection.,online information:Scramblase entry,PTM:Known to be palmitoylated at one, yet undefined, site.,similarity:Belongs to the phospholipid scramblase family.,subunit:Interacts with ABL.,tissue specificity:Expressed in platelets, erythrocyte membranes, lymphocytes, spleen, thymus, prostate, testis, uterus, intestine, colon, heart, placenta, lung, liver, kidney and pancreas. Not detected in brain and skeletal muscle.,

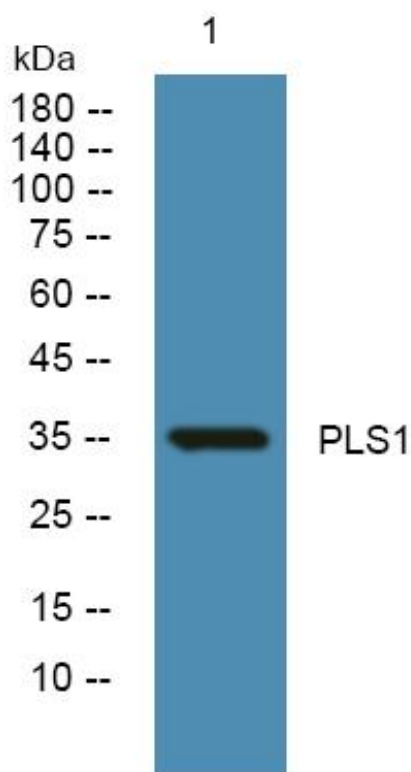
matters needing attention

Avoid repeated freezing and thawing!

Usage suggestions

This product can be used in immunological reaction related experiments. For more information, please consult technical personnel.

Products Images



Western Blot analysis of various cells using PLS1 Monoclonal Antibody

Nanjing BYabscience technology Co.,Ltd