



PIGP Monoclonal Antibody

Catalog No	BYmab-05918
Isotype	IgG
Reactivity	Human;Mouse
Applications	WB
Gene Name	PIGP DCRC DSCR5 DSCRC NPD010
Protein Name	Phosphatidylinositol N-acetylglucosaminyltransferase subunit P (EC 2.4.1.198) (Down syndrome critical region protein 5) (Down syndrome critical region protein C) (Phosphatidylinositol-glycan biosynthe
Immunogen	Synthesized peptide derived from human protein . at AA range: 70-150
Specificity	PIGP Monoclonal Antibody detects endogenous levels of protein.
Formulation	Liquid in PBS containing 50% glycerol, and 0.02% sodium azide.
Source	Monoclonal, Mouse,IgG
Purification	The antibody was affinity-purified from mouse antiserum by affinity-chromatography using epitope-specific immunogen.
Dilution	WB 1:500-2000
Concentration	1 mg/ml
Purity	≥90%
Storage Stability	-20°C/1 year
Synonyms	
Observed Band	17kD
Cell Pathway	Membrane ; Multi-pass membrane protein .
Tissue Specificity	Ubiquitous.
Function	catalytic activity:UDP-N-acetyl-D-glucosamine + 1-phosphatidyl-1D-myo-inositol = UDP + 6-(N-acetyl-alpha-D-glucosaminyl)-1-phosphatidyl-1D-myo-inositol.,function:Part of the complex catalyzing the transfer of N-acetylglucosamine from UDP-N-acetylglucosamine to phosphatidylinositol, the first step of GPI biosynthesis.,pathway:Glycolipid biosynthesis; glycosylphosphatidylinositol-anchor biosynthesis.,similarity:Belongs to the PIGP family.,subunit:Associates with PIGA, PIGC, PIGH, PIGQ and DPM2. The latter is not essential for activity.,tissue specificity:Ubiquitous.,

Nanjing BYabscience technology Co.,Ltd



Background

This gene encodes an enzyme involved in the first step of glycosylphosphatidylinositol (GPI)-anchor biosynthesis. The GPI-anchor is a glycolipid found on many blood cells that serves to anchor proteins to the cell surface. The encoded protein is a component of the GPI-N-acetylglucosaminyltransferase complex that catalyzes the transfer of N-acetylglucosamine (GlcNAc) from UDP-GlcNAc to phosphatidylinositol (PI). This gene is located in the Down Syndrome critical region on chromosome 21 and is a candidate for the pathogenesis of Down syndrome. This gene has multiple pseudogenes and is a member of the phosphatidylinositol glycan anchor biosynthesis gene family. Alternatively spliced transcript variants encoding different isoforms have been described. [provided by RefSeq, Feb 2016],

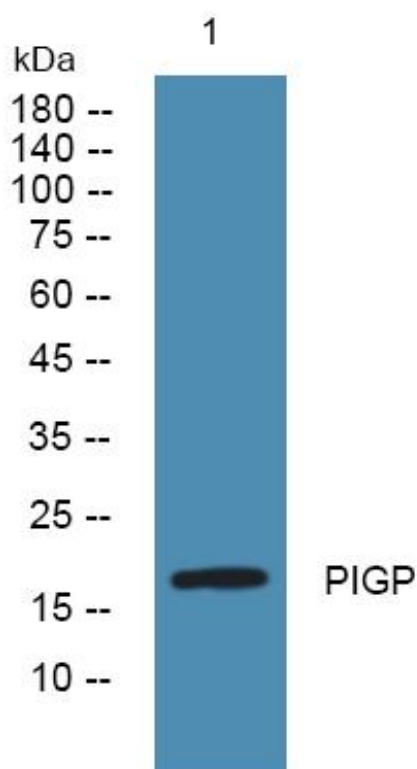
matters needing attention

Avoid repeated freezing and thawing!

Usage suggestions

This product can be used in immunological reaction related experiments. For more information, please consult technical personnel.

Products Images



Western Blot analysis of various cells using PIGP Monoclonal Antibody