



PECR Monoclonal Antibody

| | |
|--------------------|---|
| Catalog No | BYmab-05910 |
| Isotype | IgG |
| Reactivity | Human;Rat;Mouse |
| Applications | WB |
| Gene Name | PECR PRO1004 |
| Protein Name | Peroxisomal trans-2-enoyl-CoA reductase (TERP) (EC 1.3.1.38) (2,4-dienoyl-CoA reductase-related protein) (DCR-RP) (HPDHase) (pVI-ARL) |
| Immunogen | Synthesized peptide derived from human protein . at AA range: 40-120 |
| Specificity | PECR Monoclonal Antibody detects endogenous levels of protein. |
| Formulation | Liquid in PBS containing 50% glycerol, and 0.02% sodium azide. |
| Source | Monoclonal, Mouse,IgG |
| Purification | The antibody was affinity-purified from mouse antiserum by affinity-chromatography using epitope-specific immunogen. |
| Dilution | WB 1:500-2000 |
| Concentration | 1 mg/ml |
| Purity | ≥90% |
| Storage Stability | -20°C/1 year |
| Synonyms | |
| Observed Band | 33kD |
| Cell Pathway | Peroxisome . |
| Tissue Specificity | Colon,Fetal liver,Liver,Placenta, |
| Function | catalytic activity:Acyl-CoA + NADP(+) = trans-2,3-dehydroacyl-CoA + NADPH.,function:Participates in chain elongation of fatty acids. Has no 2,4-dienoyl-CoA reductase activity.,induction:Not induced by IR.,pathway:Lipid metabolism; fatty acid biosynthesis.,similarity:Belongs to the short-chain dehydrogenases/reductases (SDR) family.,subunit:Interacts with PEX5, probably required to target it into peroxisomes., |
| Background | catalytic activity:Acyl-CoA + NADP(+) = trans-2,3-dehydroacyl-CoA + NADPH.,function:Participates in chain elongation of fatty acids. Has no 2,4-dienoyl-CoA reductase activity.,induction:Not induced by IR.,pathway:Lipid metabolism; fatty acid biosynthesis.,similarity:Belongs to the short-chain dehydrogenases/reductases (SDR) family.,subunit:Interacts with PEX5, probably |

Nanjing BYabscience technology Co.,Ltd



required to target it into peroxisomes.,

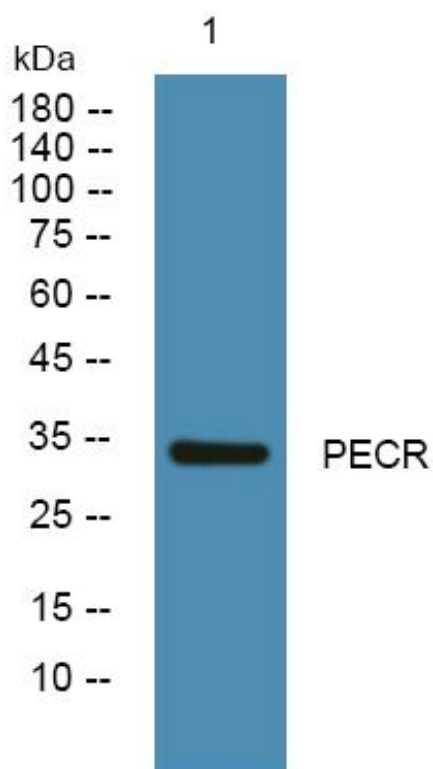
matters needing attention

Avoid repeated freezing and thawing!

Usage suggestions

This product can be used in immunological reaction related experiments. For more information, please consult technical personnel.

Products Images



Western Blot analysis of various cells using PECR Monoclonal Antibody