



# PAR6G Monoclonal Antibody

Catalog No	BYmab-05901
Isotype	IgG
Reactivity	Human;Mouse
Applications	WB
Gene Name	PAR6G PAR6G
Protein Name	Partitioning defective 6 homolog gamma (PAR-6 gamma) (PAR6D)
Immunogen	Synthesized peptide derived from human protein . at AA range: 240-320
Specificity	PAR6G Monoclonal Antibody detects endogenous levels of protein.
Formulation	Liquid in PBS containing 50% glycerol, and 0.02% sodium azide.
Source	Monoclonal, Mouse,IgG
Purification	The antibody was affinity-purified from mouse antiserum by affinity-chromatography using epitope-specific immunogen.
Dilution	WB 1:500-2000
Concentration	1 mg/ml
Purity	≥90%
Storage Stability	-20°C/1 year
Synonyms	
Observed Band	41kD
Cell Pathway	Cytoplasm. Cell membrane . Cell junction, tight junction .
Tissue Specificity	Widely expressed, with a higher expression in fetal and adult kidney.
Function	domain:The pseudo-CRIB domain together with the PDZ domain is required for the interaction with Rho small GTPases.,function:Adapter protein involved in asymmetrical cell division and cell polarization processes. May play a role in the formation of epithelial tight junctions. The PAR6-PARD3 complex links GTP-bound Rho small GTPases to atypical protein kinase C proteins.,similarity:Belongs to the PAR6 family.,similarity:Contains 1 OPR domain.,similarity:Contains 1 PDZ (DHR) domain.,similarity:Contains 1 pseudo-CRIB domain.,subunit:Interacts with PARD3 (Probable). Interacts with GTP-bound forms of CDC42, ARHQ/TC10 and RAC1. Interacts with the N-terminal part of PRKCI and PRKCZ.,tissue specificity:Widely expressed, with a higher expression in fetal and adult kidney.,

Nanjing BYabscience technology Co.,Ltd



## Background

domain:The pseudo-CRIB domain together with the PDZ domain is required for the interaction with Rho small GTPases.,function:Adapter protein involved in asymmetrical cell division and cell polarization processes. May play a role in the formation of epithelial tight junctions. The PARD6-PARD3 complex links GTP-bound Rho small GTPases to atypical protein kinase C proteins.,similarity:Belongs to the PAR6 family.,similarity:Contains 1 OPR domain.,similarity:Contains 1 PDZ (DHR) domain.,similarity:Contains 1 pseudo-CRIB domain.,subunit:Interacts with PARD3 (Probable). Interacts with GTP-bound forms of CDC42, ARHQ/TC10 and RAC1. Interacts with the N-terminal part of PRKCI and PRKCZ.,tissue specificity:Widely expressed, with a higher expression in fetal and adult kidney.,

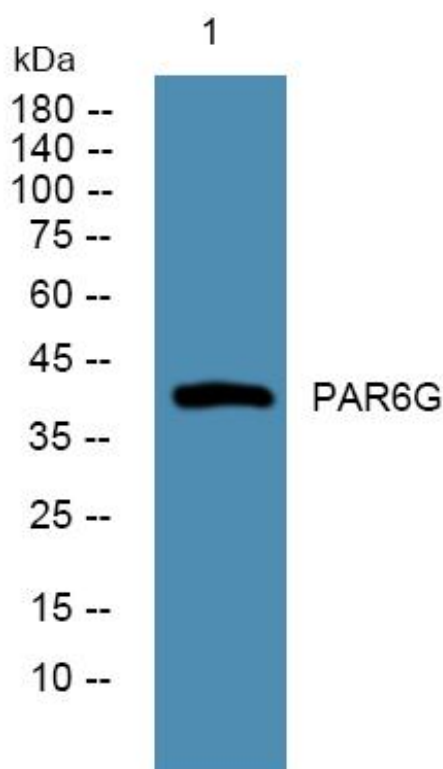
## matters needing attention

Avoid repeated freezing and thawing!

## Usage suggestions

This product can be used in immunological reaction related experiments. For more information, please consult technical personnel.

## Products Images



Western Blot analysis of various cells using PAR6G Monoclonal Antibody