



# ZDH18 Monoclonal Antibody

Catalog No	BYmab-05899
Isotype	IgG
Reactivity	Human;Mouse;Rat
Applications	WB
Gene Name	ZDHHC18
Protein Name	Palmitoyltransferase ZDHHC18 (EC 2.3.1.-) (Zinc finger DHHC domain-containing protein 18) (DHHC-18)
Immunogen	Synthesized peptide derived from human protein . at AA range: 20-100
Specificity	ZDH18 Monoclonal Antibody detects endogenous levels of protein.
Formulation	Liquid in PBS containing 50% glycerol, and 0.02% sodium azide.
Source	Monoclonal, Mouse,IgG
Purification	The antibody was affinity-purified from mouse antiserum by affinity-chromatography using epitope-specific immunogen.
Dilution	WB 1:500-2000
Concentration	1 mg/ml
Purity	≥90%
Storage Stability	-20°C/1 year
Synonyms	
Observed Band	42kD
Cell Pathway	Golgi apparatus membrane ; Multi-pass membrane protein .
Tissue Specificity	Widely expressed.
Function	catalytic activity:Palmitoyl-CoA + protein-cysteine = S-palmitoyl protein + CoA.,domain:The DHHC domain is required for palmitoyltransferase activity.,function:Has palmitoyltransferase activity towards HRAS and LCK.,similarity:Belongs to the DHHC palmitoyltransferase family. ERF2/ZDHHC9 subfamily.,similarity:Contains 1 DHHC-type zinc finger.,
Background	catalytic activity:Palmitoyl-CoA + protein-cysteine = S-palmitoyl protein + CoA.,domain:The DHHC domain is required for palmitoyltransferase activity.,function:Has palmitoyltransferase activity towards HRAS and LCK.,similarity:Belongs to the DHHC palmitoyltransferase family. ERF2/ZDHHC9 subfamily.,similarity:Contains 1 DHHC-type zinc finger.,

Nanjing BYabscience technology Co.,Ltd



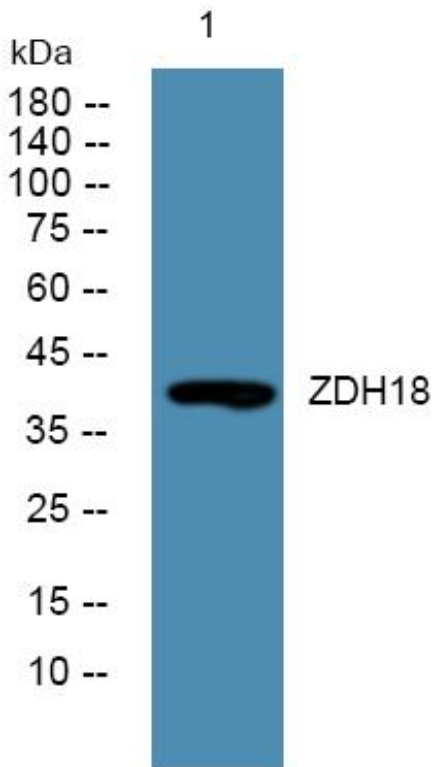
**matters needing attention**

Avoid repeated freezing and thawing!

**Usage suggestions**

This product can be used in immunological reaction related experiments. For more information, please consult technical personnel.

## Products Images



Western Blot analysis of various cells using ZDH18 Monoclonal Antibody