



NPIP Monoclonal Antibody

Catalog No	BYmab-05868
Isotype	IgG
Reactivity	Human;Rat;Mouse;
Applications	WB
Gene Name	NPIP
Protein Name	Nuclear pore complex-interacting protein (NPIP)
Immunogen	Synthesized peptide derived from human protein . at AA range: 110-190
Specificity	NPIP Monoclonal Antibody detects endogenous levels of protein.
Formulation	Liquid in PBS containing 50% glycerol, and 0.02% sodium azide.
Source	Monoclonal, Mouse,IgG
Purification	The antibody was affinity-purified from mouse antiserum by affinity-chromatography using epitope-specific immunogen.
Dilution	WB 1:500-2000
Concentration	1 mg/ml
Purity	≥90%
Storage Stability	-20°C/1 year
Synonyms	
Observed Band	38kD
Cell Pathway	Nucleus, nuclear pore complex . Nucleus membrane . Colocalizes with nuclear pore complex protein NUP62.
Tissue Specificity	Widely expressed.
Function	similarity:Belongs to the NPIP family.,similarity:Contains 1 GPS domain.,subcellular location:Colocalizes with nuclear pore complex protein NUP62.,subunit:May associate with the nuclear pore complex.,tissue specificity:Widely expressed.,
Background	similarity:Belongs to the NPIP family.,similarity:Contains 1 GPS domain.,subcellular location:Colocalizes with nuclear pore complex protein NUP62.,subunit:May associate with the nuclear pore complex.,tissue specificity:Widely expressed.,
matters needing attention	Avoid repeated freezing and thawing!

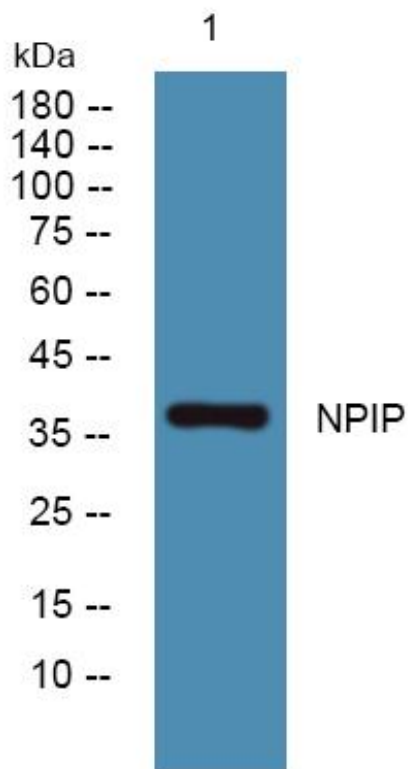
Nanjing BYabscience technology Co.,Ltd



Usage suggestions

This product can be used in immunological reaction related experiments. For more information, please consult technical personnel.

Products Images



Western Blot analysis of various cells using NPIP Monoclonal Antibody

Nanjing BYabs science technology Co.,Ltd

网址: www.njbybio.com

官方热线: 025-5229-8998

监督电话: 15950492658