



# NPTX2 Monoclonal Antibody

Catalog No	BYmab-05850
Isotype	IgG
Reactivity	Human;Rat;Mouse
Applications	WB
Gene Name	NPTX2
Protein Name	Neuronal pentraxin-2 (NP2) (Neuronal pentraxin II) (NP-II)
Immunogen	Synthesized peptide derived from human protein . at AA range: 130-210
Specificity	NPTX2 Monoclonal Antibody detects endogenous levels of protein.
Formulation	Liquid in PBS containing 50% glycerol, and 0.02% sodium azide.
Source	Monoclonal, Mouse,IgG
Purification	The antibody was affinity-purified from mouse antiserum by affinity-chromatography using epitope-specific immunogen.
Dilution	WB 1:500-2000
Concentration	1 mg/ml
Purity	≥90%
Storage Stability	-20°C/1 year
Synonyms	
Observed Band	47kD
Cell Pathway	Secreted .
Tissue Specificity	Brain, pancreas, liver, heart and skeletal muscle. Highest levels are seen in the testis.
Function	cofactor: Binds 2 calcium ions per subunit.,function: Likely to play role in the modification of cellular properties that underlie long-term plasticity. Binds to agar matrix in a calcium-dependent manner.,similarity: Contains 1 pentaxin domain.,tissue specificity: Brain, pancreas, liver, heart and skeletal muscle. Highest levels are seen in the testis.,
Background	This gene encodes a member of the family of neuronal petraxins, synaptic proteins that are related to C-reactive protein. This protein is involved in excitatory synapse formation. It also plays a role in clustering of alpha-amino-3-hydroxy-5-methyl-4-isoxazolepropionic acid (AMPA)-type glutamate receptors at established synapses, resulting in non-apoptotic cell death of dopaminergic nerve cells. Up-regulation of this gene in Parkinson disease (PD)

Nanjing BYabscience technology Co.,Ltd



tissues suggests that the protein may be involved in the pathology of PD.  
[provided by RefSeq, Feb 2009],

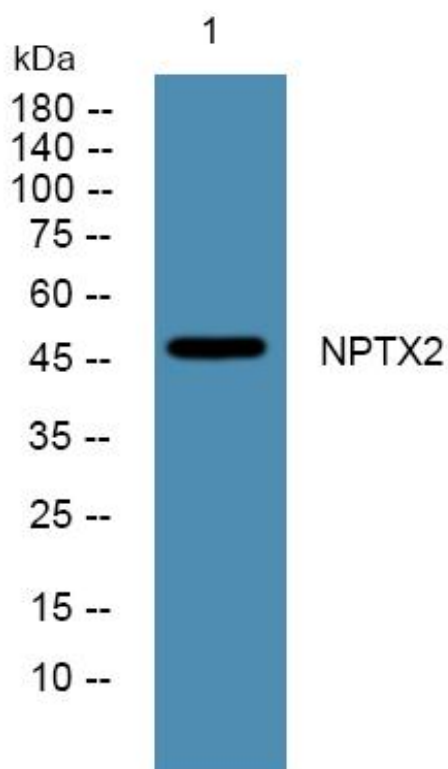
**matters needing attention**

Avoid repeated freezing and thawing!

**Usage suggestions**

This product can be used in immunological reaction related experiments. For more information, please consult technical personnel.

## Products Images



Western Blot analysis of various cells using NPTX2 Monoclonal Antibody