



NPTX1 Monoclonal Antibody

Catalog No	BYmab-05849
Isotype	IgG
Reactivity	Human;Rat;Mouse
Applications	WB
Gene Name	NPTX1
Protein Name	Neuronal pentraxin-1 (NP1) (Neuronal pentraxin I) (NP-I)
Immunogen	Synthesized peptide derived from human protein . at AA range: 170-250
Specificity	NPTX1 Monoclonal Antibody detects endogenous levels of protein.
Formulation	Liquid in PBS containing 50% glycerol, and 0.02% sodium azide.
Source	Monoclonal, Mouse,IgG
Purification	The antibody was affinity-purified from mouse antiserum by affinity-chromatography using epitope-specific immunogen.
Dilution	WB 1:500-2000
Concentration	1 mg/ml
Purity	≥90%
Storage Stability	-20°C/1 year
Synonyms	
Observed Band	47kD
Cell Pathway	Cytoplasmic vesicle, secretory vesicle .
Tissue Specificity	Chondrosarcoma,Hippocampus,
Function	cofactor:Binds 2 calcium ions per subunit.,function:May mediate uptake of degraded synaptic material which could play an important role in synaptic remodeling. Can mediate the neuronal and glial uptake of the snake venom toxin taipoxin.,similarity:Contains 1 pentaxin domain.,
Background	NPTX1 is a member of the neuronal pentraxin gene family. Neuronal pentraxin 1 is similar to the rat NP1 gene which encodes a binding protein for the snake venom toxin taipoxin. Human NPTX1 mRNA is exclusively localized to the nervous system. [provided by RefSeq, Jul 2008],
matters needing attention	Avoid repeated freezing and thawing!

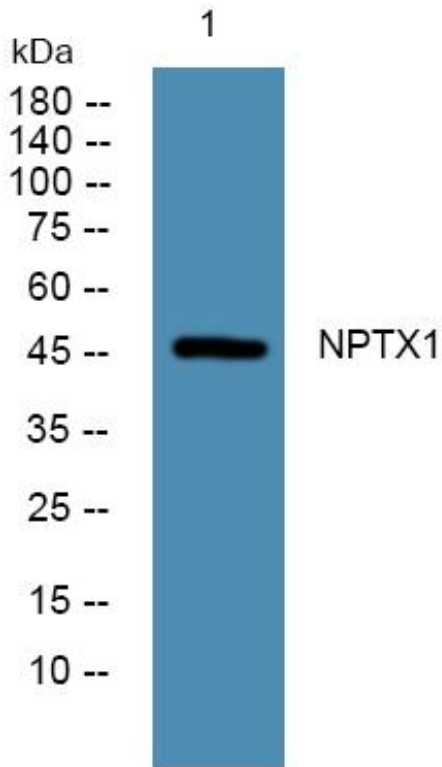
Nanjing BYabscience technology Co.,Ltd



Usage suggestions

This product can be used in immunological reaction related experiments. For more information, please consult technical personnel.

Products Images



Western Blot analysis of various cells using NPTX1 Monoclonal Antibody

Nanjing BYabs science technology Co.,Ltd

网址: www.njbybio.com

官方热线: 025-5229-8998

监督电话: 15950492658