



NGB Monoclonal Antibody

Catalog No	BYmab-05836
Isotype	IgG
Reactivity	Human;Rat;Mouse
Applications	WB
Gene Name	NGB
Protein Name	Neuroglobin
Immunogen	Synthesized peptide derived from human protein . at AA range: 50-130
Specificity	NGB Monoclonal Antibody detects endogenous levels of protein.
Formulation	Liquid in PBS containing 50% glycerol, and 0.02% sodium azide.
Source	Monoclonal, Mouse,IgG
Purification	The antibody was affinity-purified from mouse antiserum by affinity-chromatography using epitope-specific immunogen.
Dilution	WB 1:500-2000
Concentration	1 mg/ml
Purity	≥90%
Storage Stability	-20°C/1 year
Synonyms	
Observed Band	16kD
Cell Pathway	Perikaryon . Cytoplasm. Mitochondrion.
Tissue Specificity	Predominantly expressed in brain, the strongest expression is seen in the frontal lobe, the subthalamic nucleus and the thalamus.
Function	function:Involved in oxygen transport in the brain.,online information:Neuroglobin entry,similarity:Belongs to the globin family.,subunit:Monomer.,tissue specificity:Predominantly expressed in brain, the strongest expression is seen in the frontal lobe, the subthalamic nucleus and the thalamus.,
Background	This gene encodes an oxygen-binding protein that is distantly related to members of the globin gene family. It is highly conserved among other vertebrates. It is expressed in the central and peripheral nervous system where it may be involved in increasing oxygen availability and providing protection under hypoxic/ischemic conditions. [provided by RefSeq, Jul 2008],

Nanjing BYabscience technology Co.,Ltd

网址: www.njbybio.com

官方热线: 025-5229-8998

监督电话: 15950492658



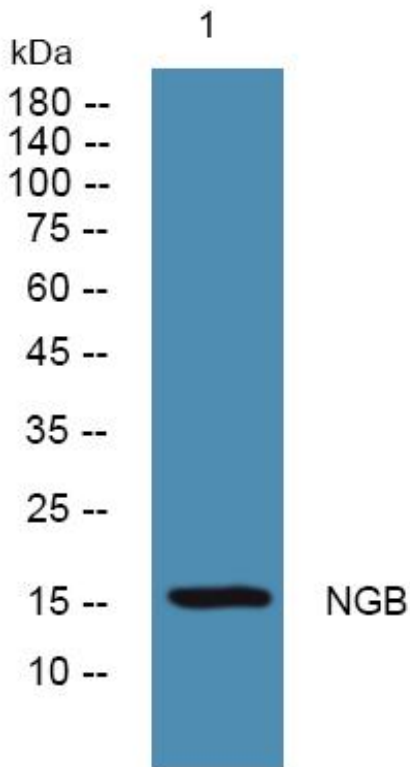
matters needing attention

Avoid repeated freezing and thawing!

Usage suggestions

This product can be used in immunological reaction related experiments. For more information, please consult technical personnel.

Products Images



Western Blot analysis of various cells using NGB Monoclonal Antibody