



NDUS8 Monoclonal Antibody

Catalog No	BYmab-05807
Isotype	IgG
Reactivity	Human;Mouse
Applications	WB
Gene Name	NDUFS8
Protein Name	NADH dehydrogenase [ubiquinone] iron-sulfur protein 8, mitochondrial (EC 1.6.5.3) (EC 1.6.99.3) (Complex I-23kD) (CI-23kD) (NADH-ubiquinone oxidoreductase 23 kDa subunit) (TYKY subunit)
Immunogen	Synthesized peptide derived from human protein . at AA range: 90-170
Specificity	NDUS8 Monoclonal Antibody detects endogenous levels of protein.
Formulation	Liquid in PBS containing 50% glycerol, and 0.02% sodium azide.
Source	Monoclonal, Mouse,IgG
Purification	The antibody was affinity-purified from mouse antiserum by affinity-chromatography using epitope-specific immunogen.
Dilution	WB 1:500-2000
Concentration	1 mg/ml
Purity	≥90%
Storage Stability	-20°C/1 year
Synonyms	
Observed Band	23kD
Cell Pathway	Mitochondrion inner membrane ; Peripheral membrane protein ; Matrix side .
Tissue Specificity	Expressed in all tissues with the highest level in heart and skeletal muscle and the lowest level in lung.
Function	catalytic activity:NADH + acceptor = NAD(+) + reduced acceptor.,catalytic activity:NADH + ubiquinone = NAD(+) + ubiquinol.,cofactor: Binds 2 4Fe-4S clusters per subunit.,disease:Defects in NDUFS8 are a cause of Leigh syndrome (LS) [MIM:256000]. LS is a severe neurological disorder characterized by bilaterally symmetrical necrotic lesions in subcortical brain regions.,function:Core subunit of the mitochondrial membrane respiratory chain NADH dehydrogenase (Complex I) that is believed to belong to the minimal assembly required for catalysis. Complex I functions in the transfer of electrons from NADH to the respiratory chain. The immediate electron acceptor for the enzyme is believed to be ubiquinone (By similarity). May donate electrons to

Nanjing BYabscience technology Co.,Ltd



ubiquinone.,similarity:Belongs to the complex I 23 kDa subunit family.,similarity:Contains 2 4Fe-4S ferredoxin-type domains.,subunit:Mammalian complex I

Background

This gene encodes a subunit of mitochondrial NADH:ubiquinone oxidoreductase, or Complex I, a multimeric enzyme of the respiratory chain responsible for NADH oxidation, ubiquinone reduction, and the ejection of protons from mitochondria. The encoded protein is involved in the binding of two of the six to eight iron-sulfur clusters of Complex I and, as such, is required in the electron transfer process. Mutations in this gene have been associated with Leigh syndrome. [provided by RefSeq, Mar 2010],

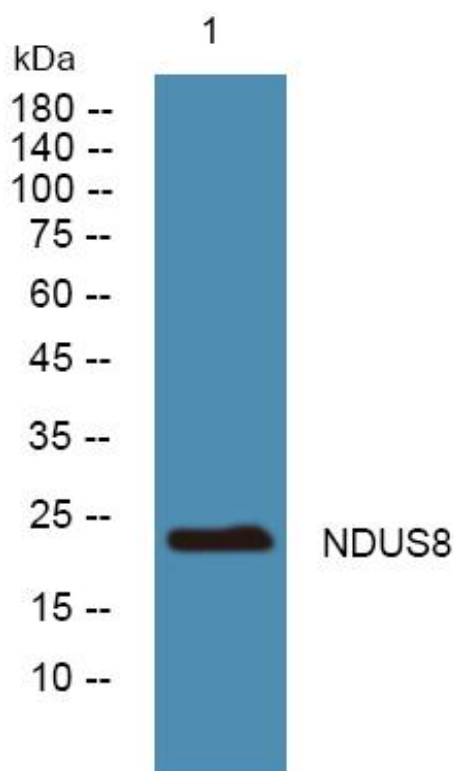
matters needing attention

Avoid repeated freezing and thawing!

Usage suggestions

This product can be used in immunological reaction related experiments. For more information, please consult technical personnel.

Products Images



Western Blot analysis of various cells using NDUS8 Monoclonal Antibody