



NDUAA Monoclonal Antibody

| | |
|---------------------------|---|
| Catalog No | BYmab-05790 |
| Isotype | IgG |
| Reactivity | Human;Rat;Mouse; |
| Applications | WB |
| Gene Name | NDUFA10 |
| Protein Name | NADH dehydrogenase [ubiquinone] 1 alpha subcomplex subunit 10, mitochondrial (Complex I-42kD) (CI-42kD) (NADH-ubiquinone oxidoreductase 42 kDa subunit) |
| Immunogen | Synthesized peptide derived from human protein . at AA range: 50-130 |
| Specificity | NDUAA Monoclonal Antibody detects endogenous levels of protein. |
| Formulation | Liquid in PBS containing 50% glycerol, and 0.02% sodium azide. |
| Source | Monoclonal, Mouse,IgG |
| Purification | The antibody was affinity-purified from mouse antiserum by affinity-chromatography using epitope-specific immunogen. |
| Dilution | WB 1:500-2000 |
| Concentration | 1 mg/ml |
| Purity | ≥90% |
| Storage Stability | -20°C/1 year |
| Synonyms | |
| Observed Band | 39kD |
| Cell Pathway | Mitochondrion matrix . |
| Tissue Specificity | Brain,Placenta,Skin, |
| Function | cofactor:Binds 1 FAD per subunit.,function:Accessory subunit of the mitochondrial membrane respiratory chain NADH dehydrogenase (Complex I), that is believed to be not involved in catalysis. Complex I functions in the transfer of electrons from NADH to the respiratory chain. The immediate electron acceptor for the enzyme is believed to be ubiquinone.,similarity:Belongs to the complex I NDUFA10 subunit family.,subunit:Complex I is composed of 45 different subunits. This a component of the hydrophobic protein fraction., |
| Background | The protein encoded by this gene is a component of 42 kDa complex I, the first enzyme complex in the electron transport chain of mitochondria. This protein has NADH dehydrogenase activity and oxidoreductase activity. It transfers electrons |

Nanjing BYabscience technology Co.,Ltd



from NADH to the respiratory chain. A mutation in this gene was found in an individual with Leigh syndrome. [provided by RefSeq, Apr 2016],

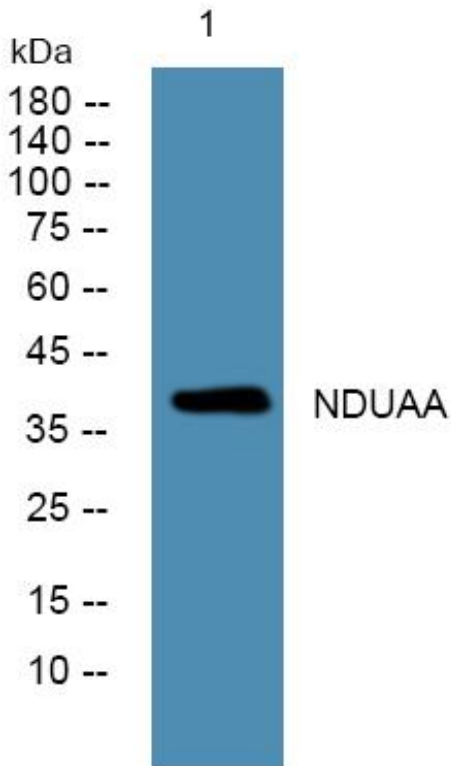
matters needing attention

Avoid repeated freezing and thawing!

Usage suggestions

This product can be used in immunological reaction related experiments. For more information, please consult technical personnel.

Products Images



Western Blot analysis of various cells using NDUA4 Monoclonal Antibody