



MPP8 Monoclonal Antibody

Catalog No	BYmab-05749
Isotype	IgG
Reactivity	Human;Rat;Mouse
Applications	WB
Gene Name	MPHOSPH8 MPP8
Protein Name	M-phase phosphoprotein 8 (Two hybrid-associated protein 3 with RanBPM) (Twa3)
Immunogen	Synthesized peptide derived from human protein . at AA range: 290-370
Specificity	MPP8 Monoclonal Antibody detects endogenous levels of protein.
Formulation	Liquid in PBS containing 50% glycerol, and 0.02% sodium azide.
Source	Monoclonal, Mouse,IgG
Purification	The antibody was affinity-purified from mouse antiserum by affinity-chromatography using epitope-specific immunogen.
Dilution	WB 1:500-2000
Concentration	1 mg/ml
Purity	≥90%
Storage Stability	-20°C/1 year
Synonyms	
Observed Band	94kD
Cell Pathway	Nucleus . Chromosome . Detected on heterochromatin (PubMed:20871592, PubMed:26022416). Dissociates from chromatin during interphase and early mitosis (PubMed:23416073). Detected on nucleosomes (PubMed:20871592). .
Tissue Specificity	Epithelium,Liver,Lymph node,Lymphoblast,Pancreas,PNS,
Function	PTM:Phosphorylated in M (mitotic) phase.,similarity:Contains 1 chromo domain.,similarity:Contains 4 ANK repeats.,
Background	PTM:Phosphorylated in M (mitotic) phase.,similarity:Contains 1 chromo domain.,similarity:Contains 4 ANK repeats.,
matters needing attention	Avoid repeated freezing and thawing!

Nanjing BYabscience technology Co.,Ltd

网址: www.njbybio.com

官方热线: 025-5229-8998

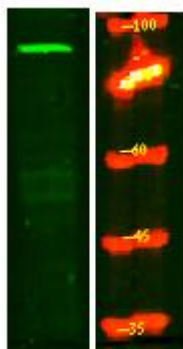
监督电话: 15950492658



Usage suggestions

This product can be used in immunological reaction related experiments. For more information, please consult technical personnel.

Products Images



Western Blot analysis of various cells using MPP8 Monoclonal Antibody