



TAM41 Monoclonal Antibody

Catalog No	BYmab-05740
Isotype	IgG
Reactivity	Human;Mouse
Applications	WB
Gene Name	TAMM41 C3orf31
Protein Name	Mitochondrial translocator assembly and maintenance protein 41 homolog (TAM41) (MMP37-like protein, mitochondrial)
Immunogen	Synthesized peptide derived from human protein . at AA range: 220-300
Specificity	TAM41 Monoclonal Antibody detects endogenous levels of protein.
Formulation	Liquid in PBS containing 50% glycerol, and 0.02% sodium azide.
Source	Monoclonal, Mouse,IgG
Purification	The antibody was affinity-purified from mouse antiserum by affinity-chromatography using epitope-specific immunogen.
Dilution	WB 1:500-2000
Concentration	1 mg/ml
Purity	≥90%
Storage Stability	-20°C/1 year
Synonyms	
Observed Band	34kD
Cell Pathway	Mitochondrion inner membrane ; Peripheral membrane protein ; Matrix side .
Tissue Specificity	Skin,
Function	function:May be involved in the translocation of transit peptide-containing proteins across the mitochondrial inner membrane.,similarity:Belongs to the MMP37 family.,
Background	function:May be involved in the translocation of transit peptide-containing proteins across the mitochondrial inner membrane.,similarity:Belongs to the MMP37 family.,
matters needing attention	Avoid repeated freezing and thawing!

Nanjing BYabscience technology Co.,Ltd

网址: www.njbybio.com

官方热线: 025-5229-8998

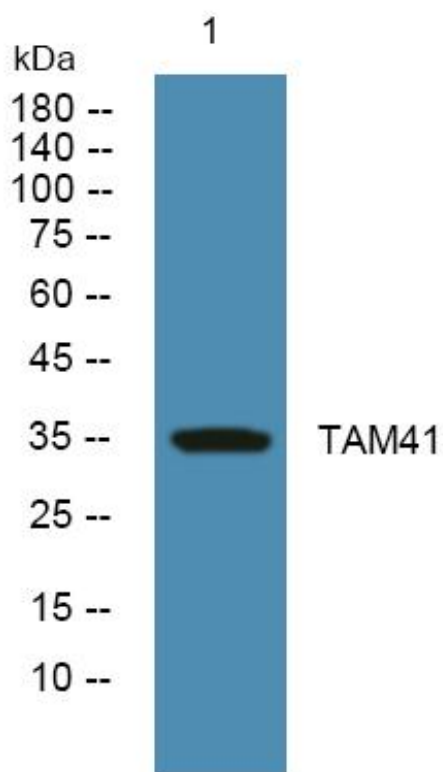
监督电话: 15950492658



Usage suggestions

This product can be used in immunological reaction related experiments. For more information, please consult technical personnel.

Products Images



Western Blot analysis of various cells using TAM41 Monoclonal Antibody

Nanjing BYabs science technology Co.,Ltd

网址: www.njbybio.com

官方热线: 025-5229-8998

监督电话: 15950492658