



# IMP1L Monoclonal Antibody

<b>Catalog No</b>	BYmab-05737
<b>Isotype</b>	IgG
<b>Reactivity</b>	Human;Mouse
<b>Applications</b>	WB
<b>Gene Name</b>	IMMP1L
<b>Protein Name</b>	Mitochondrial inner membrane protease subunit 1 (EC 3.4.21.-) (IMP1-like protein)
<b>Immunogen</b>	Synthesized peptide derived from human protein . at AA range: 70-150
<b>Specificity</b>	IMP1L Monoclonal Antibody detects endogenous levels of protein.
<b>Formulation</b>	Liquid in PBS containing 50% glycerol, and 0.02% sodium azide.
<b>Source</b>	Monoclonal, Mouse,IgG
<b>Purification</b>	The antibody was affinity-purified from mouse antiserum by affinity-chromatography using epitope-specific immunogen.
<b>Dilution</b>	WB 1:500-2000
<b>Concentration</b>	1 mg/ml
<b>Purity</b>	≥90%
<b>Storage Stability</b>	-20°C/1 year
<b>Synonyms</b>	
<b>Observed Band</b>	18kD
<b>Cell Pathway</b>	Mitochondrion inner membrane .
<b>Tissue Specificity</b>	Cerebellum, Eye,
<b>Function</b>	function:Catalyzes the removal of transit peptides required for the targeting of proteins from the mitochondrial matrix, across the inner membrane, into the inter-membrane space. Known to process the nuclear encoded protein DIABLO.,similarity:Belongs to the peptidase S26 family. IMP1 subfamily.,subunit:Heterodimer of 2 subunits, IMMP1 and IMMP2.,
<b>Background</b>	The mitochondrial inner membrane peptidase (IMP) complex generates mature, active proteins in the mitochondrial intermembrane space by proteolytically removing the mitochondrial targeting presequence of nuclear-encoded proteins. IMP1 and IMP2 (IMMP2L; MIM 605977) are the catalytic subunits of the IMP complex (Burri et al., 2005 [PubMed 15814844]).[supplied by OMIM, Sep 2008],

**Nanjing BYabscience technology Co.,Ltd**



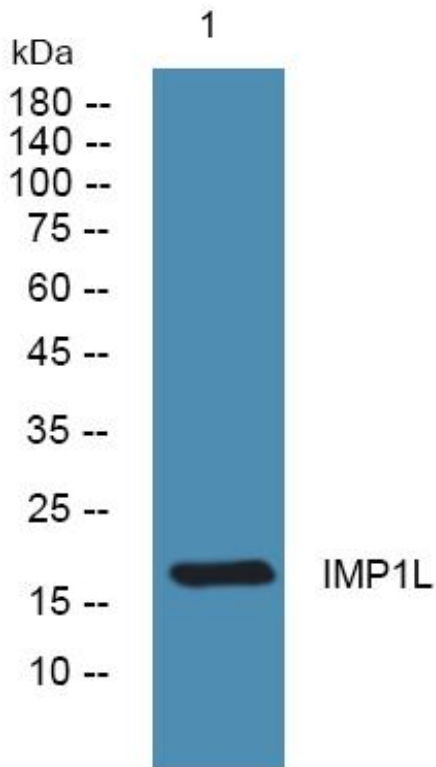
**matters needing attention**

Avoid repeated freezing and thawing!

**Usage suggestions**

This product can be used in immunological reaction related experiments. For more information, please consult technical personnel.

## Products Images



Western Blot analysis of various cells using IMP1L Monoclonal Antibody