



# RM23 Monoclonal Antibody

Catalog No	BYmab-05734
Isotype	IgG
Reactivity	Human;Rat;Mouse
Applications	WB
Gene Name	MRPL23 L23MRP RPL23L
Protein Name	39S ribosomal protein L23, mitochondrial (L23mt) (MRP-L23) (L23 mitochondrial-related protein) (Ribosomal protein L23-like)
Immunogen	Synthesized peptide derived from human protein . at AA range: 40-120
Specificity	RM23 Monoclonal Antibody detects endogenous levels of protein.
Formulation	Liquid in PBS containing 50% glycerol, and 0.02% sodium azide.
Source	Monoclonal, Mouse,IgG
Purification	The antibody was affinity-purified from mouse antiserum by affinity-chromatography using epitope-specific immunogen.
Dilution	WB 1:500-2000
Concentration	1 mg/ml
Purity	≥90%
Storage Stability	-20°C/1 year
Synonyms	
Observed Band	16kD
Cell Pathway	Mitochondrion .
Tissue Specificity	Uterus,
Function	similarity:Belongs to the ribosomal protein L23P family.,
Background	Mammalian mitochondrial ribosomal proteins are encoded by nuclear genes and help in protein synthesis within the mitochondrion. Mitochondrial ribosomes (mitoribosomes) consist of a small 28S subunit and a large 39S subunit. They have an estimated 75% protein to rRNA composition compared to prokaryotic ribosomes, where this ratio is reversed. Another difference between mammalian mitoribosomes and prokaryotic ribosomes is that the latter contain a 5S rRNA. Among different species, the proteins comprising the mitoribosome differ greatly in sequence, and sometimes in biochemical properties, which prevents easy recognition by sequence homology. This gene encodes a 39S subunit protein.

Nanjing BYabscience technology Co.,Ltd



The gene is biallelically expressed, despite its location within a region of imprinted genes on chromosome 11. [provided by RefSeq, Jul 2008],

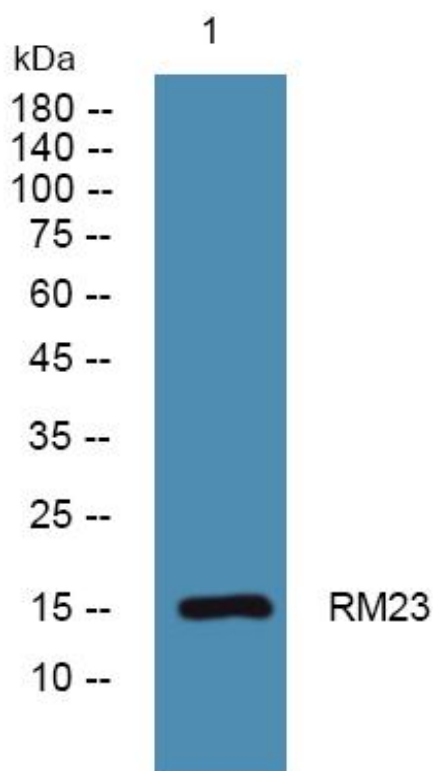
**matters needing attention**

Avoid repeated freezing and thawing!

**Usage suggestions**

This product can be used in immunological reaction related experiments. For more information, please consult technical personnel.

## Products Images



Western Blot analysis of various cells using RM23 Monoclonal Antibody