



# LHX5 Monoclonal Antibody

Catalog No	BYmab-05692
Isotype	IgG
Reactivity	Human;Rat;Mouse
Applications	WB
Gene Name	LHX5
Protein Name	LIM/homeobox protein Lhx5 (LIM homeobox protein 5)
Immunogen	Synthesized peptide derived from human protein . at AA range: 130-210
Specificity	LHX5 Monoclonal Antibody detects endogenous levels of protein.
Formulation	Liquid in PBS containing 50% glycerol, and 0.02% sodium azide.
Source	Monoclonal, Mouse,IgG
Purification	The antibody was affinity-purified from mouse antiserum by affinity-chromatography using epitope-specific immunogen.
Dilution	WB 1:500-2000
Concentration	1 mg/ml
Purity	≥90%
Storage Stability	-20°C/1 year
Synonyms	
Observed Band	44kD
Cell Pathway	Nucleus .
Tissue Specificity	Expressed in fetal brain and in various regions of the adult central nervous system including the spinal cord, the thalamus, and the cerebellum.
Function	function:Plays an essential role in the regulation of neuronal differentiation and migration during development of the central nervous system.,similarity:Contains 1 homeobox DNA-binding domain.,similarity:Contains 2 LIM zinc-binding domains.,tissue specificity:Expressed in fetal brain and in various regions of the adult central nervous system including the spinal cord, the thalamus, and the cerebellum.,
Background	This gene encodes a protein belonging to a large protein family, members of which carry the LIM domain, a unique cysteine-rich zinc-binding domain. The encoded protein may function as a transcriptional regulator and be involved in the control of differentiation and development of the forebrain. In mice, this protein is essential for the regulation of precursor cell proliferation and the control of

Nanjing BYabscience technology Co.,Ltd



neuronal differentiation and migration during hippocampal development. This protein is involved in learning and motor functions in adult mice. [provided by RefSeq, Jul 2008],

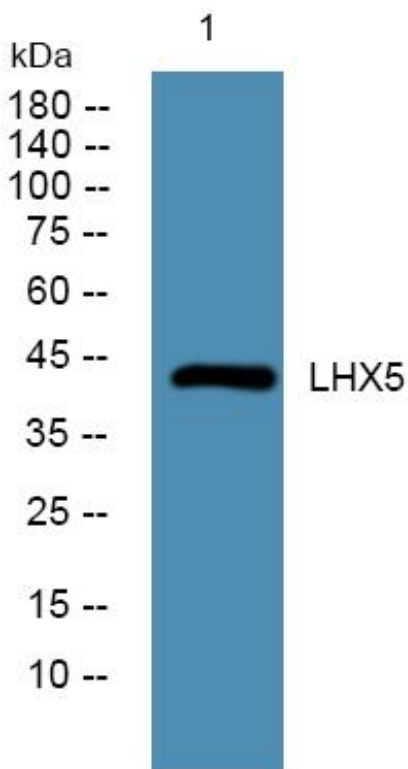
**matters needing attention**

Avoid repeated freezing and thawing!

**Usage suggestions**

This product can be used in immunological reaction related experiments. For more information, please consult technical personnel.

## Products Images



Western Blot analysis of various cells using LHX5 Monoclonal Antibody