



IRK13 Monoclonal Antibody

Catalog No	BYmab-05682
Isotype	IgG
Reactivity	Human;Rat;Mouse;
Applications	WB
Gene Name	KCNJ13
Protein Name	Inward rectifier potassium channel 13 (Inward rectifier K(+) channel Kir7.1) (Potassium channel, inwardly rectifying subfamily J member 13)
Immunogen	Synthesized peptide derived from part region of human protein
Specificity	IRK13 Monoclonal Antibody detects endogenous levels of protein.
Formulation	Liquid in PBS containing 50% glycerol, and 0.02% sodium azide.
Source	Monoclonal, Mouse,IgG
Purification	The antibody was affinity-purified from mouse antiserum by affinity-chromatography using epitope-specific immunogen.
Dilution	WB 1:500-2000
Concentration	1 mg/ml
Purity	≥90%
Storage Stability	-20°C/1 year
Synonyms	
Observed Band	39kD
Cell Pathway	Membrane; Multi-pass membrane protein.
Tissue Specificity	Predominantly expressed in small intestine. Expression is also detected in stomach, kidney, and all central nervous system regions tested with the exception of spinal cord.
Function	disease:Defects in KCNJ13 are the cause of snowflake vitreoretinal degeneration (SVD) [MIM:193230]. SVD is a developmental and progressive hereditary eye disorder that affects multiple tissues within the eye. Diagnostic features of SVD include fibrillar degeneration of the vitreous humor, early-onset cataract, minute crystalline deposits in the neurosensory retina, and retinal detachment.;function:Inward rectifier potassium channels are characterized by a greater tendency to allow potassium to flow into the cell rather than out of it. Their voltage dependence is regulated by the concentration of extracellular potassium; as external potassium is raised, the voltage range of the channel opening shifts to more positive voltages. The inward rectification is mainly due to the blockage of

Nanjing BYabscience technology Co.,Ltd



outward current by internal magnesium. KCNJ13 has a very low single channel conductance, low sensitivity t

Background

This gene encodes a member of the inwardly rectifying potassium channel family of proteins. Members of this family form ion channel pores that allow potassium ions to pass into a cell. The encoded protein belongs to a subfamily of low signal channel conductance proteins that have a low dependence on potassium concentration. Mutations in this gene are associated with snowflake vitreoretinal degeneration. Alternate splicing results in multiple transcript variants.[provided by RefSeq, Feb 2010],

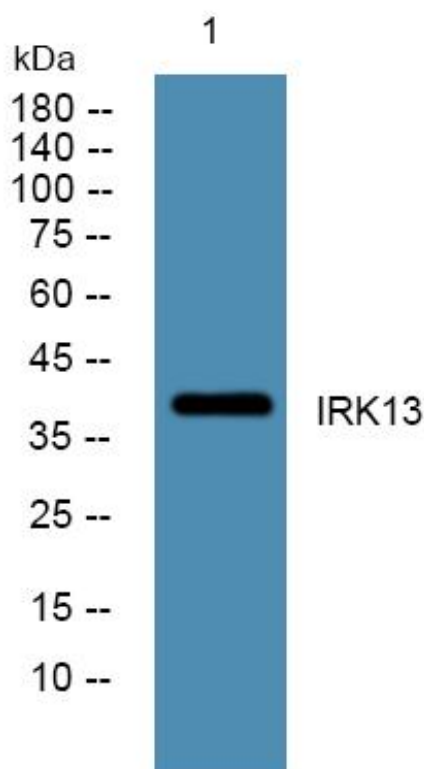
matters needing attention

Avoid repeated freezing and thawing!

Usage suggestions

This product can be used in immunological reaction related experiments. For more information, please consult technical personnel.

Products Images



Western Blot analysis of various cells using IRK13 Monoclonal Antibody