



HOME1 Monoclonal Antibody

Catalog No	BYmab-05672
Isotype	IgG
Reactivity	Human;Rat;Mouse
Applications	WB
Gene Name	HOMER1 SYN47
Protein Name	Homer protein homolog 1 (Homer-1)
Immunogen	Synthesized peptide derived from part region of human protein
Specificity	HOME1 Monoclonal Antibody detects endogenous levels of protein.
Formulation	Liquid in PBS containing 50% glycerol, and 0.02% sodium azide.
Source	Monoclonal, Mouse,IgG
Purification	The antibody was affinity-purified from mouse antiserum by affinity-chromatography using epitope-specific immunogen.
Dilution	WB 1:500-2000
Concentration	1 mg/ml
Purity	≥90%
Storage Stability	-20°C/1 year
Synonyms	
Observed Band	38kD
Cell Pathway	Cytoplasm . Cell junction, synapse, postsynaptic density . Cell junction, synapse . Cell projection, dendritic spine . Isoform 1 inhibits surface expression of GRM5 causing it to be retained in the endoplasmic reticulum. .
Tissue Specificity	Brain,Frontal cortex,Pancreas,Stomach mucosa,Synovial cell,
Function	domain:The WH1 domain interacts with the PPXXF motif in GRM1, GRM5, RYR1, RYR2, ITPR1, SHANK 1 and SHANK3.,function:Postsynaptic density scaffolding protein. Binds and cross-links cytoplasmic regions of GRM1, GRM5, ITPR1, DNMT3, RYR1, RYR2, SHANK1 and SHANK3. By physically linking GRM1 and GRM5 with ER-associated ITPR1 receptors, it aids the coupling of surface receptors to intracellular calcium release. May also couple GRM1 to PI3 kinase through its interaction with AGAP2. Isoform 1 regulates the trafficking and surface expression of GRM5. Isoform 3 acts as a natural dominant negative, in dynamic competition with constitutively expressed isoform 1 to regulate synaptic metabotropic glutamate function. Isoform 3, may be involved in the structural changes that occur at synapses during long-lasting neuronal plasticity and

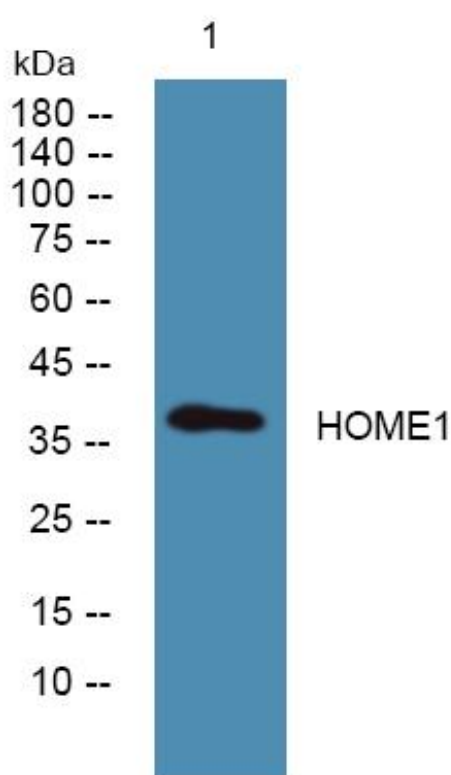
Nanjing BYabscience technology Co.,Ltd



development.,similarity:Belongs to the Homer family.,similarity:Contai

Background	This gene encodes a member of the homer family of dendritic proteins. Members of this family regulate group 1 metabotropic glutamate receptor function. [provided by RefSeq, Jul 2008],
matters needing attention	Avoid repeated freezing and thawing!
Usage suggestions	This product can be used in immunological reaction related experiments. For more information, please consult technical personnel.

Products Images



Western Blot analysis of various cells using HOME1 Monoclonal Antibody

Nanjing BYabscience technology Co.,Ltd

网址: www.njbybio.com

官方热线: 025-5229-8998

监督电话: 15950492658