



SIX3 Monoclonal Antibody

Catalog No	BYmab-05667
Isotype	IgG
Reactivity	Human;Mouse
Applications	WB
Gene Name	SIX3
Protein Name	Homeobox protein SIX3 (Sine oculis homeobox homolog 3)
Immunogen	Synthesized peptide derived from part region of human protein
Specificity	SIX3 Monoclonal Antibody detects endogenous levels of protein.
Formulation	Liquid in PBS containing 50% glycerol, and 0.02% sodium azide.
Source	Monoclonal, Mouse,IgG
Purification	The antibody was affinity-purified from mouse antiserum by affinity-chromatography using epitope-specific immunogen.
Dilution	WB 1:500-2000
Concentration	1 mg/ml
Purity	≥90%
Storage Stability	-20°C/1 year
Synonyms	
Observed Band	36kD
Cell Pathway	Nucleus .
Tissue Specificity	Retina,
Function	disease:Defects in SIX3 are the cause of holoprosencephaly type 2 (HPE2) [MIM:157170]. Holoprosencephaly (HPE) [MIM:236100] is the most common structural anomaly of the brain, in which the developing forebrain fails to correctly separate into right and left hemispheres. Holoprosencephaly is genetically heterogeneous and associated with several distinct facies and phenotypic variability.,function:May be involved in visual system development.,similarity:Belongs to the SIX/Sine oculis homeobox family.,similarity:Contains 1 homeobox DNA-binding domain.,
Background	This gene encodes a member of the sine oculis homeobox transcription factor family. The encoded protein plays a role in eye development. Mutations in this gene have been associated with holoprosencephaly type 2. [provided by RefSeq,

Nanjing BYabscience technology Co.,Ltd



Oct 2009],

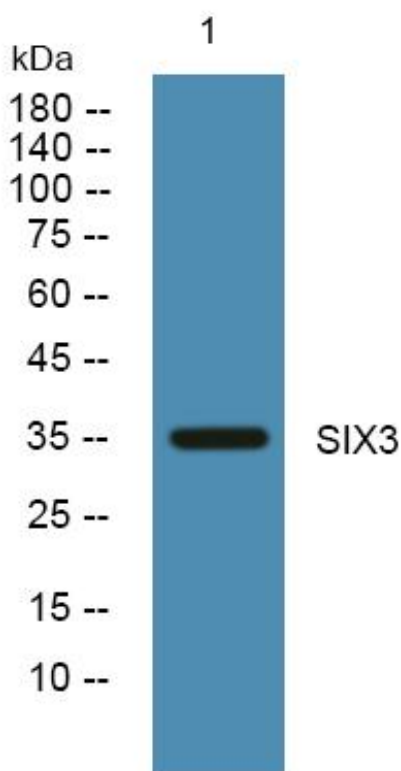
matters needing attention

Avoid repeated freezing and thawing!

Usage suggestions

This product can be used in immunological reaction related experiments. For more information, please consult technical personnel.

Products Images



Western Blot analysis of various cells using SIX3 Monoclonal Antibody