



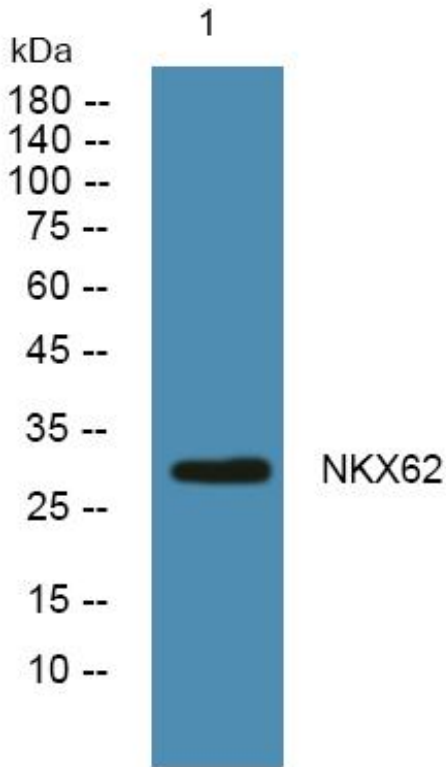
# NKX62 Monoclonal Antibody

Catalog No	BYmab-05665
Isotype	IgG
Reactivity	Human;Rat;Mouse;
Applications	WB
Gene Name	NKX6-2 GTX NKX6B
Protein Name	Homeobox protein Nkx-6.2 (Homeobox protein NK-6 homolog B)
Immunogen	Synthesized peptide derived from part region of human protein
Specificity	NKX62 Monoclonal Antibody detects endogenous levels of protein.
Formulation	Liquid in PBS containing 50% glycerol, and 0.02% sodium azide.
Source	Monoclonal, Mouse,IgG
Purification	The antibody was affinity-purified from mouse antiserum by affinity-chromatography using epitope-specific immunogen.
Dilution	WB 1:500-2000
Concentration	1 mg/ml
Purity	≥90%
Storage Stability	-20°C/1 year
Synonyms	
Observed Band	30kD
Cell Pathway	Nucleus .
Tissue Specificity	Highest expression in brain.
Function	similarity:Contains 1 homeobox DNA-binding domain.,tissue specificity:Highest expression in brain.,
Background	similarity:Contains 1 homeobox DNA-binding domain.,tissue specificity:Highest expression in brain.,
matters needing attention	Avoid repeated freezing and thawing!
Usage suggestions	This product can be used in immunological reaction related experiments. For more information, please consult technical personnel.

Nanjing BYabscience technology Co.,Ltd



## Products Images



Western Blot analysis of various cells using NKX62  
Monoclonal Antibody