



# MEIS3 Monoclonal Antibody

Catalog No	BYmab-05662
Isotype	IgG
Reactivity	Human;Mouse
Applications	WB
Gene Name	MEIS3 MRG2
Protein Name	Homeobox protein Meis3 (Meis1-related protein 2)
Immunogen	Synthesized peptide derived from part region of human protein
Specificity	MEIS3 Monoclonal Antibody detects endogenous levels of protein.
Formulation	Liquid in PBS containing 50% glycerol, and 0.02% sodium azide.
Source	Monoclonal, Mouse,IgG
Purification	The antibody was affinity-purified from mouse antiserum by affinity-chromatography using epitope-specific immunogen.
Dilution	WB 1:500-2000
Concentration	1 mg/ml
Purity	≥90%
Storage Stability	-20°C/1 year
Synonyms	
Observed Band	41kD
Cell Pathway	Nucleus .
Tissue Specificity	Brain,Kidney,Salivary gland,Testis,
Function	similarity:Belongs to the TALE/MEIS homeobox family.,similarity:Contains 1 homeobox DNA-binding domain.,
Background	This gene encodes a homeobox protein and probable transcriptional regulator. The orthologous protein in mouse controls expression of 3-phosphoinositide dependent protein kinase 1, which promotes survival of pancreatic beta-cells. [provided by RefSeq, Sep 2016],
matters needing attention	Avoid repeated freezing and thawing!

Nanjing BYabscience technology Co.,Ltd

网址: [www.njbybio.com](http://www.njbybio.com)

官方热线: 025-5229-8998

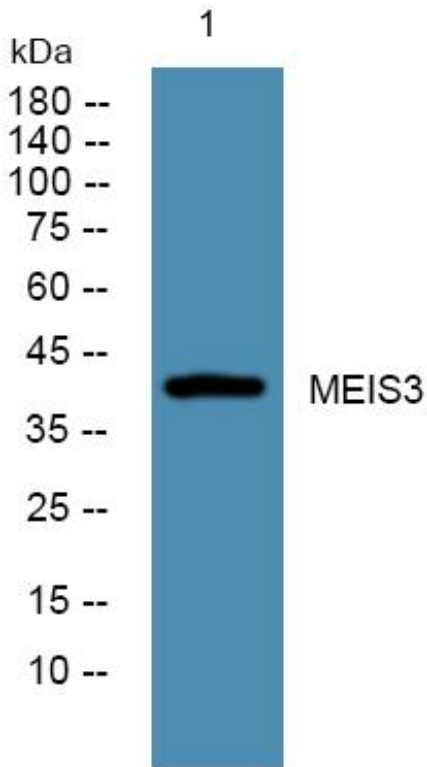
监督电话: 15950492658



### Usage suggestions

This product can be used in immunological reaction related experiments. For more information, please consult technical personnel.

## Products Images



Western Blot analysis of various cells using MEIS3 Monoclonal Antibody

Nanjing BYabs science technology Co.,Ltd

网址: [www.njbybio.com](http://www.njbybio.com)

官方热线: 025-5229-8998

监督电话: 15950492658