



HXC10 Monoclonal Antibody

Catalog No	BYmab-05653
Isotype	IgG
Reactivity	Human;Mouse
Applications	WB
Gene Name	HOXC10 HOX3I
Protein Name	Homeobox protein Hox-C10 (Homeobox protein Hox-3I)
Immunogen	Synthesized peptide derived from part region of human protein
Specificity	HXC10 Monoclonal Antibody detects endogenous levels of protein.
Formulation	Liquid in PBS containing 50% glycerol, and 0.02% sodium azide.
Source	Monoclonal, Mouse,IgG
Purification	The antibody was affinity-purified from mouse antiserum by affinity-chromatography using epitope-specific immunogen.
Dilution	WB 1:500-2000
Concentration	1 mg/ml
Purity	≥90%
Storage Stability	-20°C/1 year
Synonyms	
Observed Band	37kD
Cell Pathway	Nucleus.
Tissue Specificity	Breast,Cervix,
Function	function:Sequence-specific transcription factor which is part of a developmental regulatory system that provides cells with specific positional identities on the anterior-posterior axis.,similarity:Belongs to the Abd-B homeobox family.,similarity:Contains 1 homeobox DNA-binding domain.,
Background	This gene belongs to the homeobox family of genes. The homeobox genes encode a highly conserved family of transcription factors that play an important role in morphogenesis in all multicellular organisms. Mammals possess four similar homeobox gene clusters, HOXA, HOXB, HOXC and HOXD, which are located on different chromosomes and consist of 9 to 11 genes arranged in tandem. This gene is one of several homeobox HOXC genes located in a cluster on chromosome 12. The protein level is controlled during cell differentiation and

Nanjing BYabscience technology Co.,Ltd



proliferation, which may indicate this protein has a role in origin activation.
[provided by RefSeq, Jul 2008],

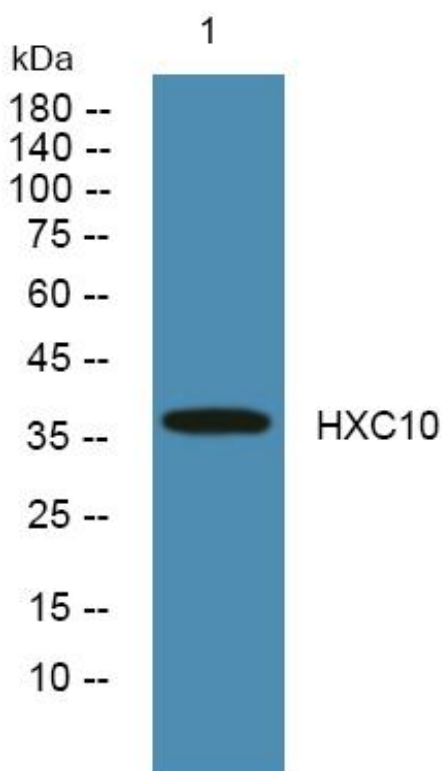
matters needing attention

Avoid repeated freezing and thawing!

Usage suggestions

This product can be used in immunological reaction related experiments. For more information, please consult technical personnel.

Products Images



Western Blot analysis of various cells using HXC10 Monoclonal Antibody