



GBX1 Monoclonal Antibody

Catalog No	BYmab-05646
Isotype	IgG
Reactivity	Human;Mouse
Applications	WB
Gene Name	GBX1
Protein Name	Homeobox protein GBX-1 (Gastrulation and brain-specific homeobox protein 1)
Immunogen	Synthesized peptide derived from part region of human protein
Specificity	GBX1 Monoclonal Antibody detects endogenous levels of protein.
Formulation	Liquid in PBS containing 50% glycerol, and 0.02% sodium azide.
Source	Monoclonal, Mouse,IgG
Purification	The antibody was affinity-purified from mouse antiserum by affinity-chromatography using epitope-specific immunogen.
Dilution	WB 1:500-2000
Concentration	1 mg/ml
Purity	≥90%
Storage Stability	-20°C/1 year
Synonyms	
Observed Band	39kD
Cell Pathway	Nucleus .
Tissue Specificity	
Function	similarity:Contains 1 homeobox DNA-binding domain.,
Background	similarity:Contains 1 homeobox DNA-binding domain.,
matters needing attention	Avoid repeated freezing and thawing!
Usage suggestions	This product can be used in immunological reaction related experiments. For more information, please consult technical personnel.

Nanjing BYabscience technology Co.,Ltd

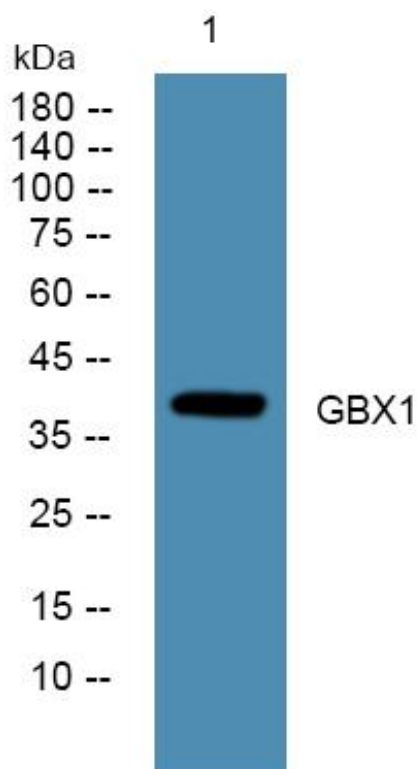
网址: www.njbybio.com

官方热线: 025-5229-8998

监督电话: 15950492658



Products Images



Western Blot analysis of various cells using GBX1
Monoclonal Antibody