



DMA Monoclonal Antibody

Catalog No	BYmab-05638
Isotype	IgG
Reactivity	Human;Rat;Mouse;
Applications	WB
Gene Name	HLA-DMA DMA RING6
Protein Name	HLA class II histocompatibility antigen, DM alpha chain (MHC class II antigen DMA) (Really interesting new gene 6 protein)
Immunogen	Synthesized peptide derived from part region of human protein
Specificity	DMA Monoclonal Antibody detects endogenous levels of protein.
Formulation	Liquid in PBS containing 50% glycerol, and 0.02% sodium azide.
Source	Monoclonal, Mouse,IgG
Purification	The antibody was affinity-purified from mouse antiserum by affinity-chromatography using epitope-specific immunogen.
Dilution	WB 1:500-2000
Concentration	1 mg/ml
Purity	≥90%
Storage Stability	-20°C/1 year
Synonyms	
Observed Band	28kD
Cell Pathway	Late endosome membrane; Single-pass type I membrane protein. Lysosome membrane; Single-pass type I membrane protein. Localizes to late endocytic compartment. Associates with lysosome membranes.
Tissue Specificity	Lung,Salivary gland,Skeletal muscle,
Function	function:Plays a critical role in catalyzing the release of class II HLA-associated invariant chain-derived peptides (CLIP) from newly synthesized class II HLA molecules and freeing the peptide binding site for acquisition of antigenic peptides.,polymorphism:The following alleles of DMA are known: DMA*0101, DMA*0102, DMA*0103 (DMA3.2) and DMA*0104 (DMA3.4). The sequence shown is that of DMA*0101.,similarity:Belongs to the MHC class II family.,similarity:Contains 1 Ig-like C1-type (immunoglobulin-like) domain.,subcellular location:Localizes to late endocytic compartment. Associates with lysosome membranes.,subunit:Heterodimer of an alpha chain (DMA) and a beta chain (DMB).,

Nanjing BYabscience technology Co.,Ltd



Background

HLA-DMA belongs to the HLA class II alpha chain paralogues. This class II molecule is a heterodimer consisting of an alpha (DMA) and a beta chain (DMB), both anchored in the membrane. It is located in intracellular vesicles. DM plays a central role in the peptide loading of MHC class II molecules by helping to release the CLIP molecule from the peptide binding site. Class II molecules are expressed in antigen presenting cells (APC: B lymphocytes, dendritic cells, macrophages). The alpha chain is approximately 33-35 kDa and its gene contains 5 exons. Exon one encodes the leader peptide, exons 2 and 3 encode the two extracellular domains, exon 4 encodes the transmembrane domain and the cytoplasmic tail. [provided by RefSeq, Jul 2008],

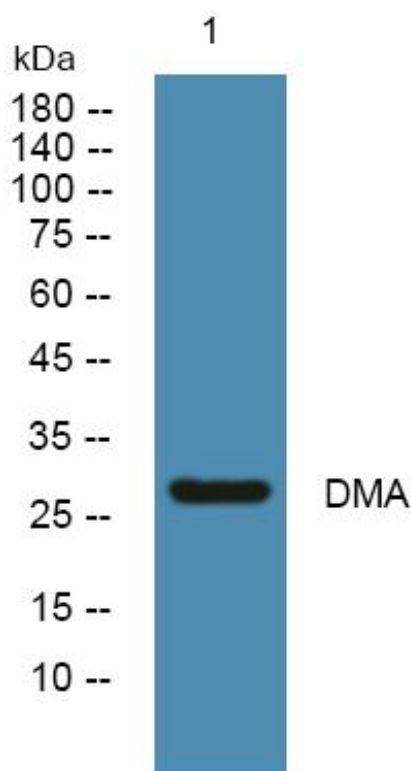
matters needing attention

Avoid repeated freezing and thawing!

Usage suggestions

This product can be used in immunological reaction related experiments. For more information, please consult technical personnel.

Products Images



Western Blot analysis of various cells using DMA Monoclonal Antibody