



GUC2B Monoclonal Antibody

Catalog No	BYmab-05632
Isotype	IgG
Reactivity	Human;Rat;Mouse;
Applications	WB
Gene Name	GUCA2B
Protein Name	Guanylate cyclase activator 2B [Cleaved into: Guanylate cyclase C-activating peptide 2 (Guanylate cyclase C-activating peptide II) (GCAP-II); Uroguanylin (UGN)]
Immunogen	Synthesized peptide derived from part region of human protein AA range: 1-50
Specificity	GUC2B Monoclonal Antibody detects endogenous levels of protein.
Formulation	Liquid in PBS containing 50% glycerol, and 0.02% sodium azide.
Source	Monoclonal, Mouse,IgG
Purification	The antibody was affinity-purified from mouse antiserum by affinity-chromatography using epitope-specific immunogen.
Dilution	WB 1:500-2000
Concentration	1 mg/ml
Purity	≥90%
Storage Stability	-20°C/1 year
Synonyms	
Observed Band	12kD
Cell Pathway	Secreted.
Tissue Specificity	Stomach and intestine.
Function	function:Endogenous activator of intestinal guanylate cyclase. It stimulates this enzyme through the same receptor binding region as the heat-stable enterotoxins. May be a potent physiological regulator of intestinal fluid and electrolyte transport. May be an autocrine/paracrine regulator of intestinal salt and water transport.,similarity:Belongs to the guanylin family.,tissue specificity:Stomach and intestine.,
Background	This gene encodes a preproprotein that is proteolytically processed to generate multiple protein products, including uroguanylin, a member of the guanylin family of peptides and an endogenous ligand of the guanylate cyclase-C receptor. Binding of this peptide to its cognate receptor stimulates an increase in cyclic

Nanjing BYabscience technology Co.,Ltd



GMP and may regulate salt and water homeostasis in the intestine and kidneys.
[provided by RefSeq, Nov 2015],

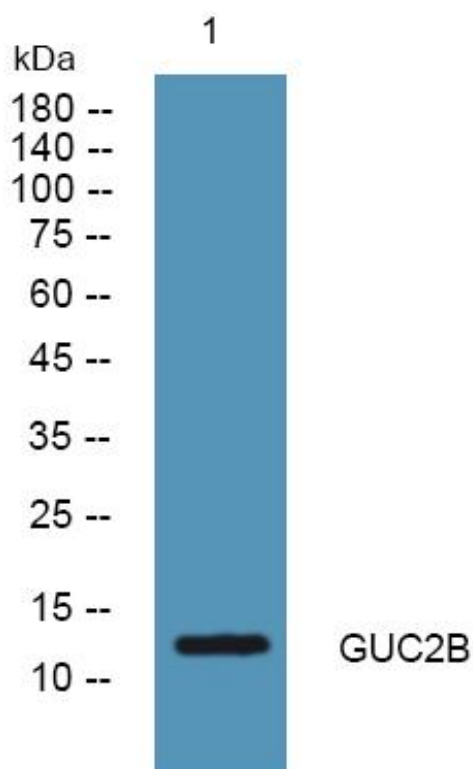
matters needing attention

Avoid repeated freezing and thawing!

Usage suggestions

This product can be used in immunological reaction related experiments. For more information, please consult technical personnel.

Products Images



Western Blot analysis of various cells using GUC2B Monoclonal Antibody