



# DIRA3 Monoclonal Antibody

Catalog No	BYmab-05617
Isotype	IgG
Reactivity	Human;Rat;Mouse;
Applications	WB
Gene Name	DIRAS3 ARHI NOEY2 RHOI
Protein Name	GTP-binding protein Di-Ras3 (Distinct subgroup of the Ras family member 3) (Rho-related GTP-binding protein RhoI)
Immunogen	Synthesized peptide derived from part region of human protein
Specificity	DIRA3 Monoclonal Antibody detects endogenous levels of protein.
Formulation	Liquid in PBS containing 50% glycerol, and 0.02% sodium azide.
Source	Monoclonal, Mouse,IgG
Purification	The antibody was affinity-purified from mouse antiserum by affinity-chromatography using epitope-specific immunogen.
Dilution	WB 1:500-2000
Concentration	1 mg/ml
Purity	≥90%
Storage Stability	-20°C/1 year
Synonyms	
Observed Band	25kD
Cell Pathway	Cell membrane ; Lipid-anchor ; Cytoplasmic side .
Tissue Specificity	Expressed in normal ovarian and breast epithelial cells but not in ovarian and breast cancers.
Function	online information:NOEY2 entry,similarity:Belongs to the small GTPase superfamily. Di-Ras family.,tissue specificity:Expressed in normal ovarian and breast epithelial cells but not in ovarian and breast cancers.,
Background	This gene encodes a member of the ras superfamily. This gene is imprinted gene with monoallelic expression of the paternal allele which is associated with growth suppression. The encoded protein acts as a tumor suppressor whose function is abrogated in many ovarian and breast cancers. This protein may also play a role autophagy in certain cancer cells by regulating the autophagosome initiation complex. [provided by RefSeq, Nov 2015],

Nanjing BYabscience technology Co.,Ltd



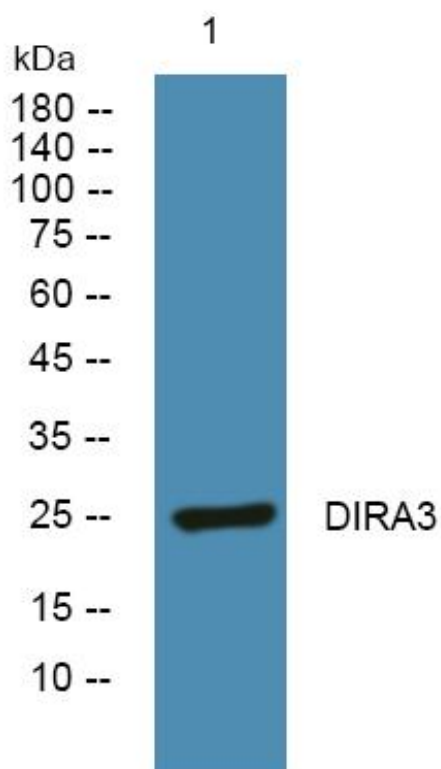
**matters needing attention**

Avoid repeated freezing and thawing!

**Usage suggestions**

This product can be used in immunological reaction related experiments. For more information, please consult technical personnel.

## Products Images



Western Blot analysis of various cells using DIRA3 Monoclonal Antibody