



DIRA2 Monoclonal Antibody

Catalog No	BYmab-05616
Isotype	IgG
Reactivity	Human;Mouse
Applications	WB
Gene Name	DIRAS2
Protein Name	GTP-binding protein Di-Ras2 (Distinct subgroup of the Ras family member 2)
Immunogen	Synthesized peptide derived from part region of human protein
Specificity	DIRA2 Monoclonal Antibody detects endogenous levels of protein.
Formulation	Liquid in PBS containing 50% glycerol, and 0.02% sodium azide.
Source	Monoclonal, Mouse,IgG
Purification	The antibody was affinity-purified from mouse antiserum by affinity-chromatography using epitope-specific immunogen.
Dilution	WB 1:500-2000
Concentration	1 mg/ml
Purity	≥90%
Storage Stability	-20°C/1 year
Synonyms	
Observed Band	21kD
Cell Pathway	Cell membrane ; Lipid-anchor ; Cytoplasmic side .
Tissue Specificity	Highly expressed in brain.
Function	function:Displays low GTPase activity and exist predominantly in the GTP-bound form.,similarity:Belongs to the small GTPase superfamily. Di-Ras family.,tissue specificity:Highly expressed in brain.,
Background	DIRAS2 belongs to a distinct branch of the functionally diverse Ras (see HRAS; MIM 190020) superfamily of monomeric GTPases.[supplied by OMIM, Apr 2004],
matters needing attention	Avoid repeated freezing and thawing!

Nanjing BYabscience technology Co.,Ltd

网址: www.njbybio.com

官方热线: 025-5229-8998

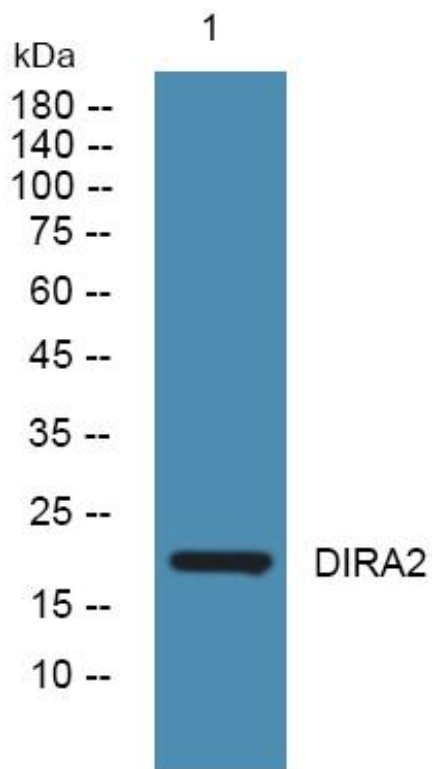
监督电话: 15950492658



Usage suggestions

This product can be used in immunological reaction related experiments. For more information, please consult technical personnel.

Products Images



Western Blot analysis of various cells using DIRA2 Monoclonal Antibody