



GIMA7 Monoclonal Antibody

Catalog No	BYmab-05612
Isotype	IgG
Reactivity	Human;Rat;Mouse;
Applications	WB
Gene Name	GIMAP7 IAN7
Protein Name	GTPase IMAP family member 7 (Immunity-associated nucleotide 7 protein) (IAN-7)
Immunogen	Synthesized peptide derived from part region of human protein
Specificity	GIMA7 Monoclonal Antibody detects endogenous levels of protein.
Formulation	Liquid in PBS containing 50% glycerol, and 0.02% sodium azide.
Source	Monoclonal, Mouse,IgG
Purification	The antibody was affinity-purified from mouse antiserum by affinity-chromatography using epitope-specific immunogen.
Dilution	WB 1:500-2000
Concentration	1 mg/ml
Purity	≥90%
Storage Stability	-20°C/1 year
Synonyms	
Observed Band	33kD
Cell Pathway	Lipid droplet . Cytoplasm . Endoplasmic reticulum . Golgi apparatus . Colocalizes with GIMAP2 on the surface of cytoplasmic lipid droplets.
Tissue Specificity	Most abundantly expressed in spleen, lymph nodes, and fetal kidney, but also present in the heart and the small intestine. Lower expression levels are found in lung, kidney, liver, and thyroid, salivary, and mammary glands. Also detected in the thymus (PubMed:15474311). Detected in T-cells (PubMed:23454188).
Function	similarity:Belongs to the IAN GTP-binding protein family.,
Background	This gene encodes a protein belonging to the GTP-binding superfamily and to the immuno-associated nucleotide (IAN) subfamily of nucleotide-binding proteins. In humans, the IAN subfamily genes are located in a cluster at 7q36.1. [provided by RefSeq, Jul 2008],
matters needing attention	Avoid repeated freezing and thawing!

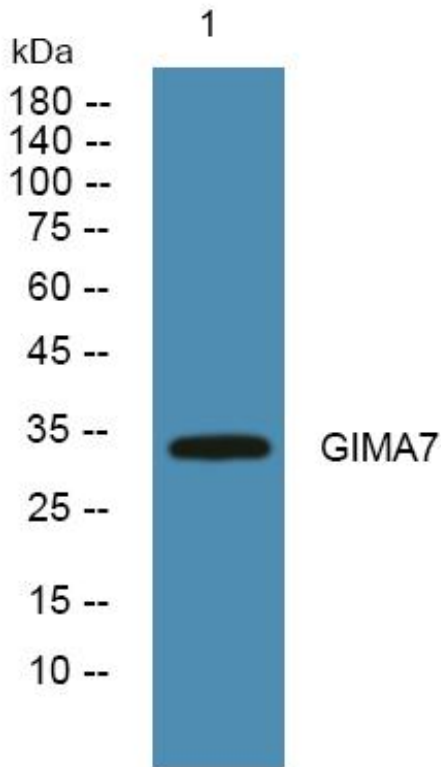
Nanjing BYabscience technology Co.,Ltd



Usage suggestions

This product can be used in immunological reaction related experiments. For more information, please consult technical personnel.

Products Images



Western Blot analysis of various cells using GIMA7 Monoclonal Antibody

Nanjing BYabs science technology Co.,Ltd

网址: www.njbybio.com

官方热线: 025-5229-8998

监督电话: 15950492658