



FOLR3 Monoclonal Antibody

Catalog No	BYmab-05589
Isotype	IgG
Reactivity	Human;Rat;Mouse;
Applications	WB
Gene Name	FOLR3
Protein Name	Folate receptor gamma (FR-gamma) (Folate receptor 3)
Immunogen	Synthesized peptide derived from part region of human protein
Specificity	FOLR3 Monoclonal Antibody detects endogenous levels of protein.
Formulation	Liquid in PBS containing 50% glycerol, and 0.02% sodium azide.
Source	Monoclonal, Mouse,IgG
Purification	The antibody was affinity-purified from mouse antiserum by affinity-chromatography using epitope-specific immunogen.
Dilution	WB 1:500-2000
Concentration	1 mg/ml
Purity	≥90%
Storage Stability	-20°C/1 year
Synonyms	
Observed Band	26kD
Cell Pathway	Secreted.
Tissue Specificity	Spleen, thymus, bone marrow, ovarian carcinoma, and uterine carcinoma.
Function	function: Binds to folate and reduced folic acid derivatives and mediates delivery of 5-methyltetrahydrofolate to the interior of cells. Isoform Short does not bind folate.,PTM: Eight disulfide bonds are present.,similarity: Belongs to the folate receptor family.,tissue specificity: Spleen, thymus, bone marrow, ovarian carcinoma, and uterine carcinoma.,
Background	This gene encodes a member of the folate receptor (FOLR) family of proteins, which have a high affinity for folic acid and for several reduced folic acid derivatives, and mediate delivery of 5-methyltetrahydrofolate to the interior of cells. Expression of this gene may be elevated in ovarian and primary peritoneal carcinoma. This gene is present in a gene cluster on chromosome 11. Alternative splicing results in multiple transcript variants. [provided by RefSeq, Dec 2015],

Nanjing BYabscience technology Co.,Ltd



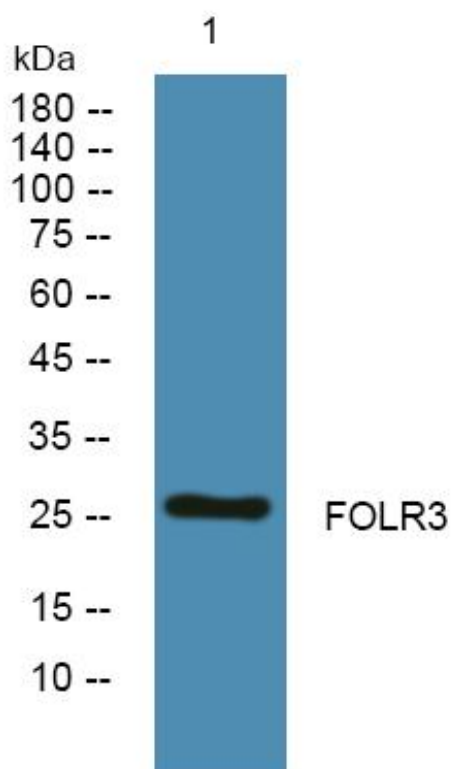
matters needing attention

Avoid repeated freezing and thawing!

Usage suggestions

This product can be used in immunological reaction related experiments. For more information, please consult technical personnel.

Products Images



Western Blot analysis of various cells using FOLR3 Monoclonal Antibody