



# FOLR2 Monoclonal Antibody

Catalog No	BYmab-05588
Isotype	IgG
Reactivity	Human;Mouse
Applications	WB
Gene Name	FOLR2
Protein Name	Folate receptor beta (FR-beta) (Folate receptor 2) (Folate receptor, fetal/placental) (Placental folate-binding protein) (FBP)
Immunogen	Synthesized peptide derived from part region of human protein
Specificity	FOLR2 Monoclonal Antibody detects endogenous levels of protein.
Formulation	Liquid in PBS containing 50% glycerol, and 0.02% sodium azide.
Source	Monoclonal, Mouse,IgG
Purification	The antibody was affinity-purified from mouse antiserum by affinity-chromatography using epitope-specific immunogen.
Dilution	WB 1:500-2000
Concentration	1 mg/ml
Purity	≥90%
Storage Stability	-20°C/1 year
Synonyms	
Observed Band	28kD
Cell Pathway	Cell membrane; Lipid-anchor, GPI-anchor. Secreted .
Tissue Specificity	Expressed in placenta and hematopoietic cells. Expression is increased in malignant tissues.
Function	function: Binds to folate and reduced folic acid derivatives and mediates delivery of 5-methyltetrahydrofolate to the interior of cells.,PTM: Eight disulfide bonds are present.,PTM: N-glycosylated.,similarity: Belongs to the folate receptor family.,tissue specificity: Expressed in placenta and hematopoietic cells. Expression is increased in malignant tissues.,
Background	The protein encoded by this gene is a member of the folate receptor (FOLR) family, and these genes exist in a cluster on chromosome 11. Members of this gene family have a high affinity for folic acid and for several reduced folic acid derivatives, and they mediate delivery of 5-methyltetrahydrofolate to the interior of cells. This protein has a 68% and 79% sequence homology with the FOLR1 and FOLR3 proteins, respectively. Although this protein was originally thought to be

**Nanjing BYabscience technology Co.,Ltd**



specific to placenta, it can also exist in other tissues, and it may play a role in the transport of methotrexate in synovial macrophages in rheumatoid arthritis patients. Multiple transcript variants that encode the same protein have been found for this gene. [provided by RefSeq, Jul 2008],

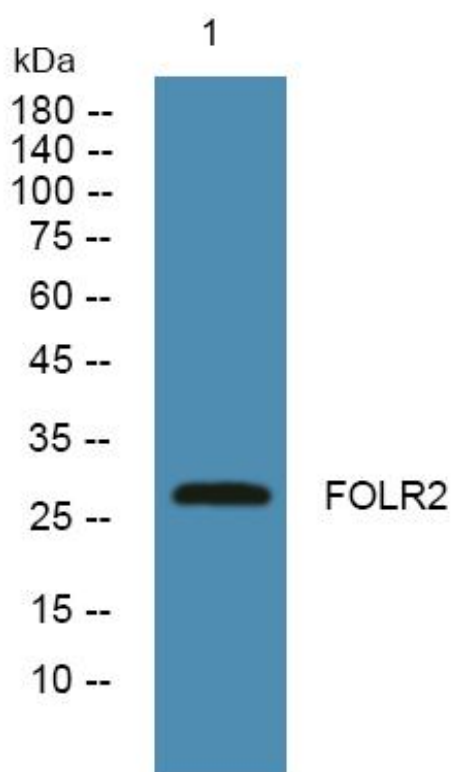
**matters needing attention**

Avoid repeated freezing and thawing!

**Usage suggestions**

This product can be used in immunological reaction related experiments. For more information, please consult technical personnel.

## Products Images



Western Blot analysis of various cells using FOLR2 Monoclonal Antibody