



RNF5 Monoclonal Antibody

Catalog No	BYmab-05562
Isotype	IgG
Reactivity	Human;Mouse;Rat
Applications	WB
Gene Name	RNF5 G16 NG2 RMA1
Protein Name	E3 ubiquitin-protein ligase RNF5 (EC 6.3.2.-) (Protein G16) (RING finger protein 5) (Ram1 homolog) (HsRma1)
Immunogen	Synthesized peptide derived from part region of human protein
Specificity	RNF5 Monoclonal Antibody detects endogenous levels of protein.
Formulation	Liquid in PBS containing 50% glycerol, and 0.02% sodium azide.
Source	Monoclonal, Mouse,IgG
Purification	The antibody was affinity-purified from mouse antiserum by affinity-chromatography using epitope-specific immunogen.
Dilution	WB 1:500-2000
Concentration	1 mg/ml
Purity	≥90%
Storage Stability	-20°C/1 year
Synonyms	
Observed Band	19kD
Cell Pathway	Cell membrane ; Multi-pass membrane protein . Mitochondrion membrane ; Multi-pass membrane protein . Endoplasmic reticulum membrane ; Multi-pass membrane protein . Predominantly located in the plasma membrane, with some localization occurring within cytoplasmic organelles. .
Tissue Specificity	Widely expressed.
Function	function:Has E2-dependent E3 ubiquitin-protein ligase activity. May function together with E2 ubiquitin-conjugating enzymes UBE2D1/UBCH5A and UBE2D2/UBC4. Mediates ubiquitination of PXN/paxillin and Salmonella type III secreted protein sopA. May be involved in regulation of cell motility and localization of PXN/paxillin..similarity:Contains 1 RING-type zinc finger..subcellular location:Predominantly located in the plasma membrane, with some localization occurring within cytoplasmic organelles..subunit:Interacts with PXN. Interacts with Salmonella typhimurium sopA. Interacts with JAMP..tissue specificity:Widely expressed.,

Nanjing BYabscience technology Co.,Ltd



Background

The protein encoded by this gene contains a RING finger, which is a motif known to be involved in protein-protein interactions. This protein is a membrane-bound ubiquitin ligase. It can regulate cell motility by targeting paxillin ubiquitination and altering the distribution and localization of paxillin in cytoplasm and cell focal adhesions. [provided by RefSeq, Jul 2008],

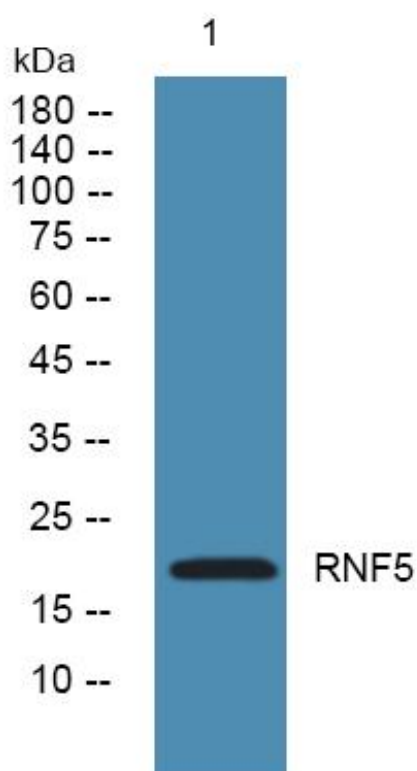
matters needing attention

Avoid repeated freezing and thawing!

Usage suggestions

This product can be used in immunological reaction related experiments. For more information, please consult technical personnel.

Products Images



Western Blot analysis of various cells using RNF5 Monoclonal Antibody