



RPC9 Monoclonal Antibody

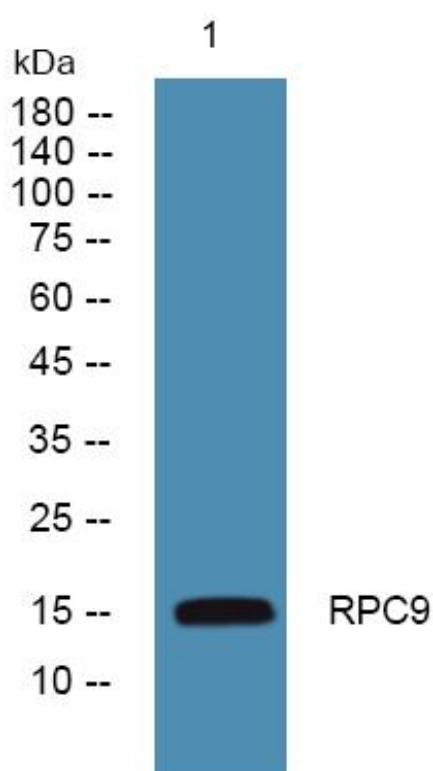
Catalog No	BYmab-05538
Isotype	IgG
Reactivity	Human;Rat;Mouse;
Applications	WB
Gene Name	CRCP
Protein Name	DNA-directed RNA polymerase III subunit RPC9 (RNA polymerase III subunit C9) (Calcitonin gene-related peptide-receptor component protein) (CGRP-RCP) (CGRP-receptor component protein) (CGRPRCP) (HsC17)
Immunogen	Synthesized peptide derived from part region of human protein
Specificity	RPC9 Monoclonal Antibody detects endogenous levels of protein.
Formulation	Liquid in PBS containing 50% glycerol, and 0.02% sodium azide.
Source	Monoclonal, Mouse,IgG
Purification	The antibody was affinity-purified from mouse antiserum by affinity-chromatography using epitope-specific immunogen.
Dilution	WB 1:500-2000
Concentration	1 mg/ml
Purity	≥90%
Storage Stability	-20°C/1 year
Synonyms	
Observed Band	16kD
Cell Pathway	Nucleus . Cell membrane ; Peripheral membrane protein ; Cytoplasmic side .
Tissue Specificity	Ubiquitous. Most prevalent in testis.
Function	caution:The sequence shown here is derived from an Ensembl automatic analysis pipeline and should be considered as preliminary data.,function:Accessory protein for the calcitonin gene-related peptide (CGRP) receptor. It modulates CGRP responsiveness in a variety of tissues.,function:DNA-dependent RNA polymerase catalyzes the transcription of DNA into RNA using the four ribonucleoside triphosphates as substrates. Specific peripheric component of RNA polymerase III which synthesizes small RNAs, such as 5S rRNA and tRNAs.,similarity:Belongs to the eukaryotic RPC9 RNA polymerase subunit family.,subunit:Component of the RNA polymerase III (Pol III) complex consisting of 17 subunits (By similarity). Interacts with POLR3H/RPC8. POLR3H/RPC8 and CRCP/RPC9 probably form a Pol III subcomplex.,tissue specificity:Ubiquitous. Most prevalent in testis.,

Nanjing BYabscience technology Co.,Ltd



Background	This gene encodes a membrane protein that functions as part of a receptor complex for a small neuropeptide that increases intracellular cAMP levels. Alternate transcriptional splice variants, encoding different isoforms, have been characterized. [provided by RefSeq, Jul 2008],
matters needing attention	Avoid repeated freezing and thawing!
Usage suggestions	This product can be used in immunological reaction related experiments. For more information, please consult technical personnel.

Products Images



Western Blot analysis of various cells using RPC9 Monoclonal Antibody