



# RPA43 Monoclonal Antibody

<b>Catalog No</b>	BYmab-05531
<b>Isotype</b>	IgG
<b>Reactivity</b>	Human;Rat;Mouse;
<b>Applications</b>	WB
<b>Gene Name</b>	TWISTNB
<b>Protein Name</b>	DNA-directed RNA polymerase I subunit RPA43 (Twist neighbor protein)
<b>Immunogen</b>	Synthesized peptide derived from part region of human protein
<b>Specificity</b>	RPA43 Monoclonal Antibody detects endogenous levels of protein.
<b>Formulation</b>	Liquid in PBS containing 50% glycerol, and 0.02% sodium azide.
<b>Source</b>	Monoclonal, Mouse,IgG
<b>Purification</b>	The antibody was affinity-purified from mouse antiserum by affinity-chromatography using epitope-specific immunogen.
<b>Dilution</b>	WB 1:500-2000
<b>Concentration</b>	1 mg/ml
<b>Purity</b>	≥90%
<b>Storage Stability</b>	-20°C/1 year
<b>Synonyms</b>	
<b>Observed Band</b>	37kD
<b>Cell Pathway</b>	Nucleus, nucleolus .
<b>Tissue Specificity</b>	Widely expressed. Expressed in all fetal and adult tissues tested, with highest expression in fetal lung, liver, and kidney, and low expression in all adult tissues.
<b>Function</b>	function:DNA-dependent RNA polymerase catalyzes the transcription of DNA into RNA using the four ribonucleoside triphosphates as substrates. Component of RNA polymerase I which synthesizes ribosomal RNA precursors. Through its association with RRN3/TIF-1A may be involved in recruitment of Pol I to rDNA promoters.,similarity:Belongs to the eukaryotic RPA43 RNA polymerase subunit family.,subunit:Component of the RNA polymerase I (Pol I) complex consisting of at least 13 subunits (By similarity). Interacts with RRN3/TIF-1A.,tissue specificity:Widely expressed. Expressed in all fetal and adult tissues tested, with highest expression in fetal lung, liver, and kidney, and low expression in all adult tissues.,

**Nanjing BYabscience technology Co.,Ltd**

网址: [www.njbybio.com](http://www.njbybio.com)

官方热线: 025-5229-8998

监督电话: 15950492658



## Background

function:DNA-dependent RNA polymerase catalyzes the transcription of DNA into RNA using the four ribonucleoside triphosphates as substrates. Component of RNA polymerase I which synthesizes ribosomal RNA precursors. Through its association with RRN3/TIF-IA may be involved in recruitment of Pol I to rDNA promoters.,similarity:Belongs to the eukaryotic RPA43 RNA polymerase subunit family.,subunit:Component of the RNA polymerase I (Pol I) complex consisting of at least 13 subunits (By similarity). Interacts with RRN3/TIF-IA.,tissue specificity:Widely expressed. Expressed in all fetal and adult tissues tested, with highest expression in fetal lung, liver, and kidney, and low expression in all adult tissues.,

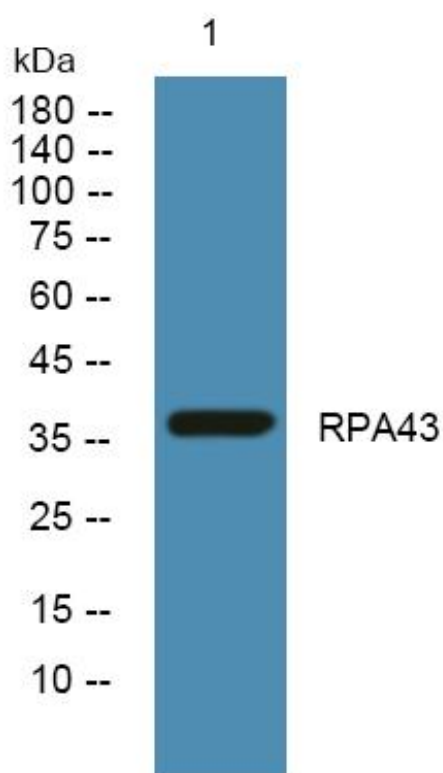
## matters needing attention

Avoid repeated freezing and thawing!

## Usage suggestions

This product can be used in immunological reaction related experiments. For more information, please consult technical personnel.

## Products Images



Western Blot analysis of various cells using RPA43 Monoclonal Antibody