



# DHRS7 Monoclonal Antibody

<b>Catalog No</b>	BYmab-05512
<b>Isotype</b>	IgG
<b>Reactivity</b>	Human;Rat;Mouse;
<b>Applications</b>	WB
<b>Gene Name</b>	DHRS7 DHRS7A RETSDR4 CGI-86 UNQ285/PRO3448
<b>Protein Name</b>	Dehydrogenase/reductase SDR family member 7 (EC 1.1.-.-) (Retinal short-chain dehydrogenase/reductase 4) (retSDR4)
<b>Immunogen</b>	Synthesized peptide derived from part region of human protein
<b>Specificity</b>	DHRS7 Monoclonal Antibody detects endogenous levels of protein.
<b>Formulation</b>	Liquid in PBS containing 50% glycerol, and 0.02% sodium azide.
<b>Source</b>	Monoclonal, Mouse,IgG
<b>Purification</b>	The antibody was affinity-purified from mouse antiserum by affinity-chromatography using epitope-specific immunogen.
<b>Dilution</b>	WB 1:500-2000
<b>Concentration</b>	1 mg/ml
<b>Purity</b>	≥90%
<b>Storage Stability</b>	-20°C/1 year
<b>Synonyms</b>	
<b>Observed Band</b>	37kD
<b>Cell Pathway</b>	Endoplasmic reticulum membrane . Bound to the endoplasmic reticulum membrane, possibly through a N-terminus anchor. The main bulk of the polypeptide chain was first reported to be facing toward the lumen of the endoplasmic reticulum (PubMed:24246760). However, it was later shown to be facing the cytosol (PubMed:28457967). .
<b>Tissue Specificity</b>	Found predominantly in the adrenal glands, liver, thyroid, prostate, small intestine, colon, stomach, kidney and brain (PubMed:26466768). Lower levels observed in skeletal muscle, the lung and the spleen (PubMed:26466768).
<b>Function</b>	similarity:Belongs to the short-chain dehydrogenases/reductases (SDR) family.,
<b>Background</b>	This gene encodes a member of the short-chain dehydrogenases/reductases (SDR) family, which has over 46,000 members. Members in this family are enzymes that metabolize many different compounds, such as steroid hormones, prostaglandins, retinoids, lipids and xenobiotics. [provided by RefSeq, Apr 2016],

**Nanjing BYabscience technology Co.,Ltd**



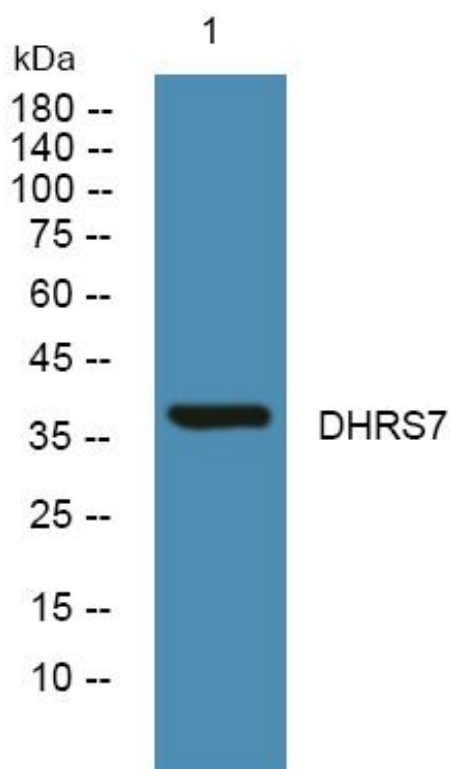
**matters needing attention**

Avoid repeated freezing and thawing!

**Usage suggestions**

This product can be used in immunological reaction related experiments. For more information, please consult technical personnel.

## Products Images



Western Blot analysis of various cells using DHRS7 Monoclonal Antibody