



CYTF Monoclonal Antibody

Catalog No	BYmab-05502
Isotype	IgG
Reactivity	Human;Rat;Mouse;
Applications	WB
Gene Name	CST7
Protein Name	Cystatin-F (Cystatin-7) (Cystatin-like metastasis-associated protein) (CMAP) (Leukocystatin)
Immunogen	Synthesized peptide derived from part region of human protein
Specificity	CYTF Monoclonal Antibody detects endogenous levels of protein.
Formulation	Liquid in PBS containing 50% glycerol, and 0.02% sodium azide.
Source	Monoclonal, Mouse,IgG
Purification	The antibody was affinity-purified from mouse antiserum by affinity-chromatography using epitope-specific immunogen.
Dilution	WB 1:500-2000
Concentration	1 mg/ml
Purity	≥90%
Storage Stability	-20°C/1 year
Synonyms	
Observed Band	15kD
Cell Pathway	Secreted . Cytoplasm .
Tissue Specificity	Primarily expressed in peripheral blood cells and spleen.
Function	function:Inhibits papain and cathepsin L but with affinities lower than other cystatins. May play a role in immune regulation through inhibition of a unique target in the hematopoietic system.,similarity:Belongs to the cystatin family.,subunit:Homodimer; disulfide-linked.,tissue specificity:Primarily expressed in peripheral blood cells and spleen.,
Background	The cystatin superfamily encompasses proteins that contain multiple cystatin-like sequences. Some of the members are active cysteine protease inhibitors, while others have lost or perhaps never acquired this inhibitory activity. There are three inhibitory families in the superfamily, including the type 1 cystatins (stefins), type 2 cystatins and the kininogens. The type 2 cystatin proteins are a class of cysteine proteinase inhibitors found in a variety of human fluids and secretions. This gene

Nanjing BYabscience technology Co.,Ltd



encodes a glycosylated cysteine protease inhibitor with a putative role in immune regulation through inhibition of a unique target in the hematopoietic system. Expression of the protein has been observed in various human cancer cell lines established from malignant tumors. [provided by RefSeq, Jul 2008],

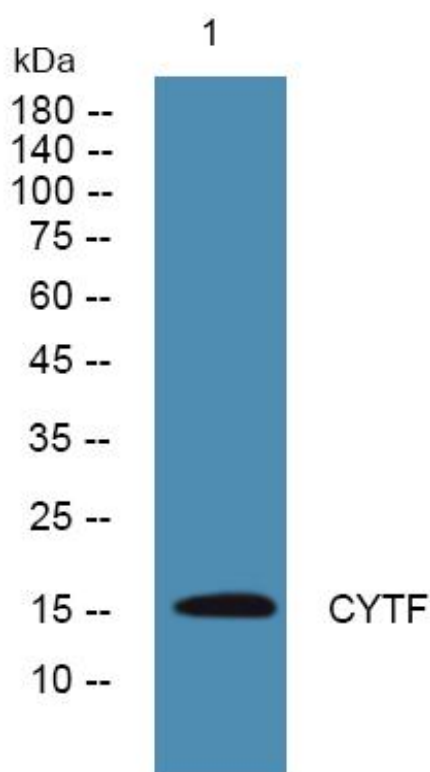
matters needing attention

Avoid repeated freezing and thawing!

Usage suggestions

This product can be used in immunological reaction related experiments. For more information, please consult technical personnel.

Products Images



Western Blot analysis of various cells using CYTF Monoclonal Antibody