



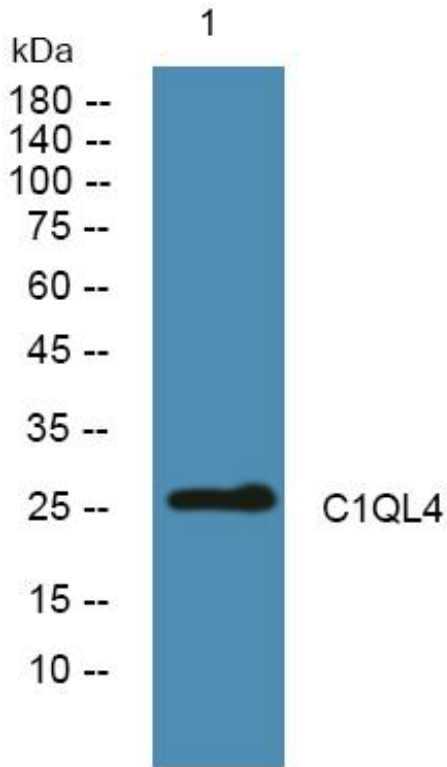
C1QL4 Monoclonal Antibody

| | |
|---------------------------|---|
| Catalog No | BYmab-05489 |
| Isotype | IgG |
| Reactivity | Human;Mouse |
| Applications | WB |
| Gene Name | C1QL4 |
| Protein Name | Complement C1q-like protein 4 |
| Immunogen | Synthesized peptide derived from part region of human protein AA range: 110-150 |
| Specificity | C1QL4 Monoclonal Antibody detects endogenous levels of protein. |
| Formulation | Liquid in PBS containing 50% glycerol, and 0.02% sodium azide. |
| Source | Monoclonal, Mouse,IgG |
| Purification | The antibody was affinity-purified from mouse antiserum by affinity-chromatography using epitope-specific immunogen. |
| Dilution | WB 1:500-2000 |
| Concentration | 1 mg/ml |
| Purity | ≥90% |
| Storage Stability | -20°C/1 year |
| Synonyms | |
| Observed Band | 26kD |
| Cell Pathway | Secreted . |
| Tissue Specificity | Highest expression levels in testis and adipose tissue, lower levels in skeletal muscle and kidney. |
| Function | similarity:Contains 1 C1q domain.,similarity:Contains 1 collagen-like domain., |
| Background | similarity:Contains 1 C1q domain.,similarity:Contains 1 collagen-like domain., |
| matters needing attention | Avoid repeated freezing and thawing! |
| Usage suggestions | This product can be used in immunological reaction related experiments. For more information, please consult technical personnel. |

Nanjing BYabscience technology Co.,Ltd



Products Images



Nanjing BYabs science technology Co.,Ltd

网址: www.njbybio.com

官方热线: 025-5229-8998

监督电话: 15950492658