



HAUS2 Monoclonal Antibody

Catalog No	BYmab-05448
Isotype	IgG
Reactivity	Human;Rat;Mouse;
Applications	WB
Gene Name	HAUS2 C15orf25 CEP27
Protein Name	HAUS augmin-like complex subunit 2 (Centrosomal protein of 27 kDa)
Immunogen	Synthesized peptide derived from part region of human protein
Specificity	HAUS2 Monoclonal Antibody detects endogenous levels of protein.
Formulation	Liquid in PBS containing 50% glycerol, and 0.02% sodium azide.
Source	Monoclonal, Mouse,IgG
Purification	The antibody was affinity-purified from mouse antiserum by affinity-chromatography using epitope-specific immunogen.
Dilution	WB 1:500-2000
Concentration	1 mg/ml
Purity	≥90%
Storage Stability	-20°C/1 year
Synonyms	
Observed Band	25kD
Cell Pathway	Cytoplasm, cytoskeleton, microtubule organizing center, centrosome . Cytoplasm, cytoskeleton, spindle . Localizes to interphase centrosomes and to mitotic spindle microtubules. .
Tissue Specificity	
Function	M phase of mitotic cell cycle, microtubule cytoskeleton organization, mitotic cell cycle, M phase, nuclear division, cytoskeleton organization, microtubule-based process, cell cycle, spindle organization, mitosis, cell cycle process, cell cycle phase, microtubule organizing center organization, organelle fission, spindle assembly, centrosome organization, cell division,
Background	The protein encoded by this gene is a subunit of the augmin complex. The augmin complex plays a role in microtubule attachment to the kinetochore and central spindle formation. [provided by RefSeq, Apr 2016],

Nanjing BYabscience technology Co.,Ltd

网址: www.njbybio.com

官方热线: 025-5229-8998

监督电话: 15950492658



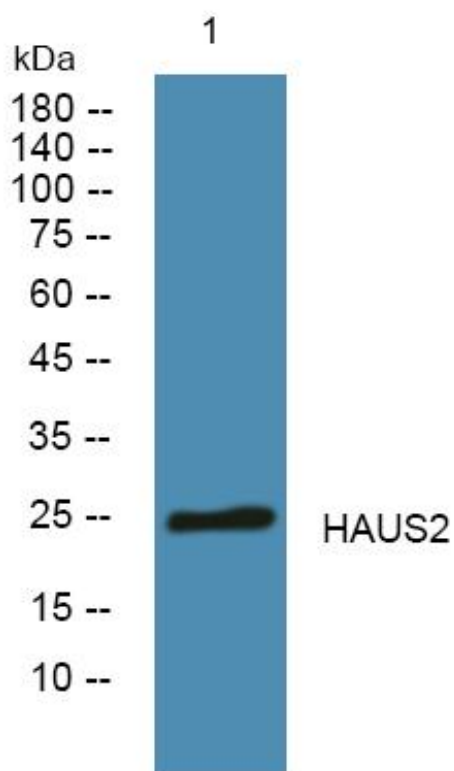
matters needing attention

Avoid repeated freezing and thawing!

Usage suggestions

This product can be used in immunological reaction related experiments. For more information, please consult technical personnel.

Products Images



Western Blot analysis of various cells using HAUS2 Monoclonal Antibody