



# MPRD Monoclonal Antibody

Catalog No	BYmab-05443
Isotype	IgG
Reactivity	Human;Mouse;Rat
Applications	WB
Gene Name	M6PR MPR46 MPRD
Protein Name	Cation-dependent mannose-6-phosphate receptor (CD Man-6-P receptor) (CD-MPR) (46 kDa mannose 6-phosphate receptor) (MPR 46)
Immunogen	Synthesized peptide derived from part region of human protein
Specificity	MPRD Monoclonal Antibody detects endogenous levels of protein.
Formulation	Liquid in PBS containing 50% glycerol, and 0.02% sodium azide.
Source	Monoclonal, Mouse,IgG
Purification	The antibody was affinity-purified from mouse antiserum by affinity-chromatography using epitope-specific immunogen.
Dilution	WB 1:500-2000
Concentration	1 mg/ml
Purity	≥90%
Storage Stability	-20°C/1 year
Synonyms	
Observed Band	30kD
Cell Pathway	Lysosome membrane; Single-pass type I membrane protein.
Tissue Specificity	Leukocyte,Liver,Muscle,Uterus,
Function	domain:The extracellular domain is homologous to the repeating units (of approximately 147 AA) of the cation-independent mannose 6-phosphate receptor.,function:Transport of phosphorylated lysosomal enzymes from the Golgi complex and the cell surface to lysosomes. Lysosomal enzymes bearing phosphomannosyl residues bind specifically to mannose-6-phosphate receptors in the Golgi apparatus and the resulting receptor-ligand complex is transported to an acidic prelysosomal compartment where the low pH mediates the dissociation of the complex.,miscellaneous:This receptor has optimal binding in the presence of divalent cations.,subunit:Homodimer. Binds GGA1, GGA2 and GGA3.,
Background	This gene encodes a member of the P-type lectin family. P-type lectins play a critical role in lysosome function through the specific transport of

Nanjing BYabscience technology Co.,Ltd



mannose-6-phosphate-containing acid hydrolases from the Golgi complex to lysosomes. The encoded protein functions as a homodimer and requires divalent cations for ligand binding. Alternatively spliced transcript variants encoding multiple isoforms have been observed for this gene. A pseudogene of this gene is located on the long arm of chromosome X. [provided by RefSeq, May 2011],

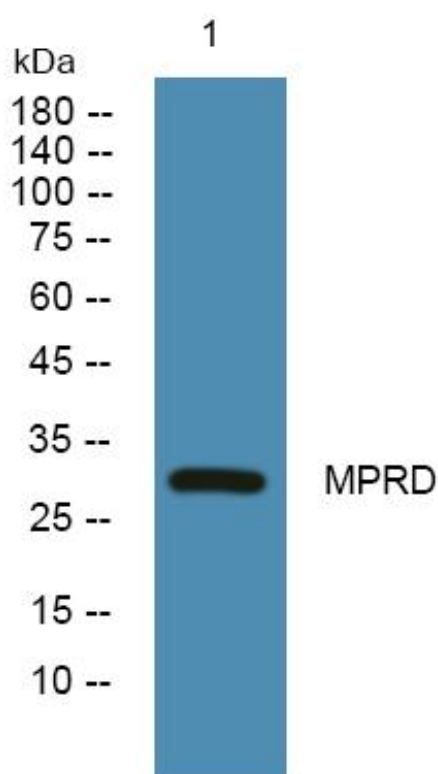
**matters needing attention**

Avoid repeated freezing and thawing!

**Usage suggestions**

This product can be used in immunological reaction related experiments. For more information, please consult technical personnel.

## Products Images



Western Blot analysis of various cells using MPRD Monoclonal Antibody